



CPC Africa Desk InterTropical (ITF) Front Analysis

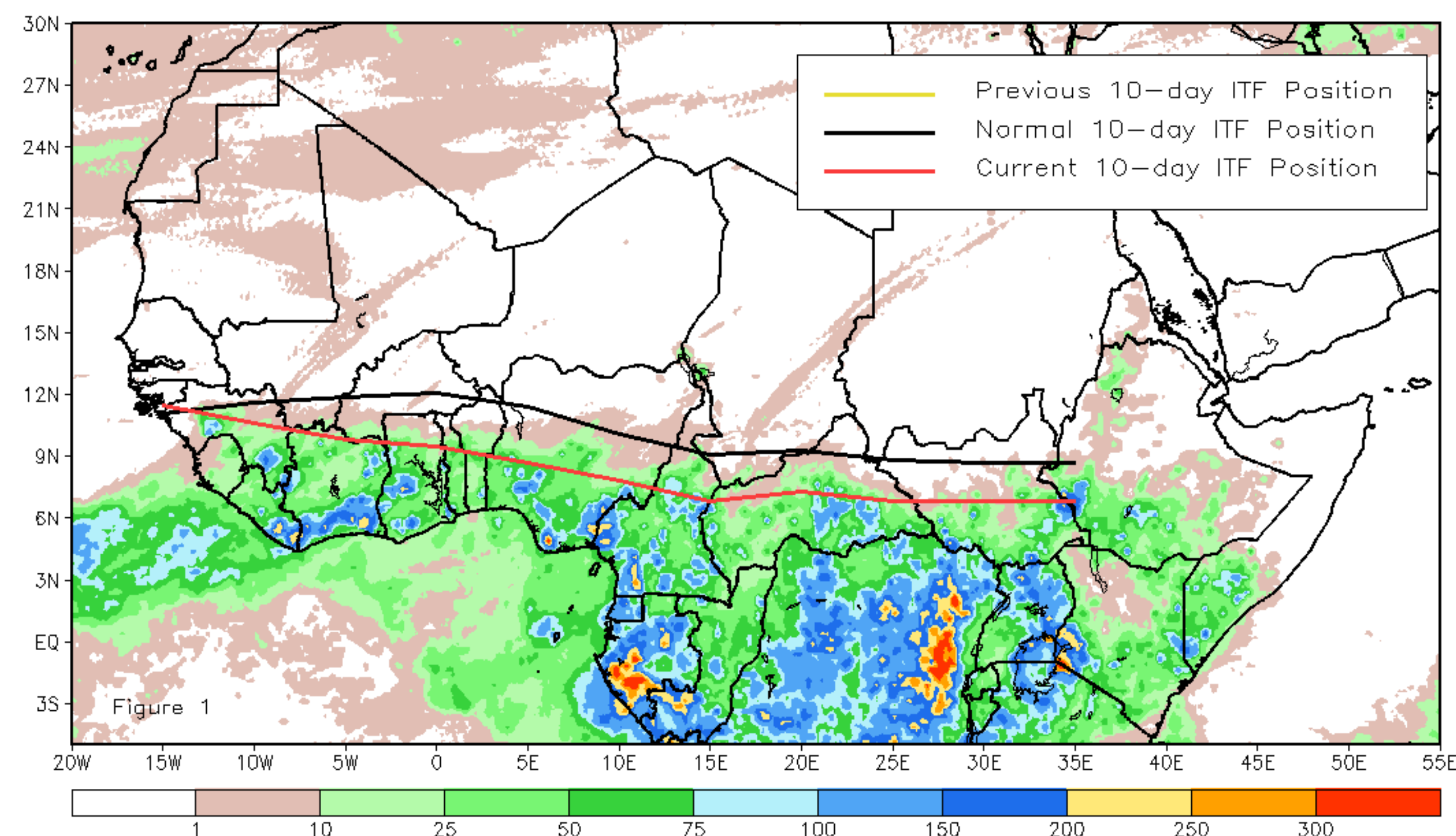
April 2021, Dekad 1

Discussion:

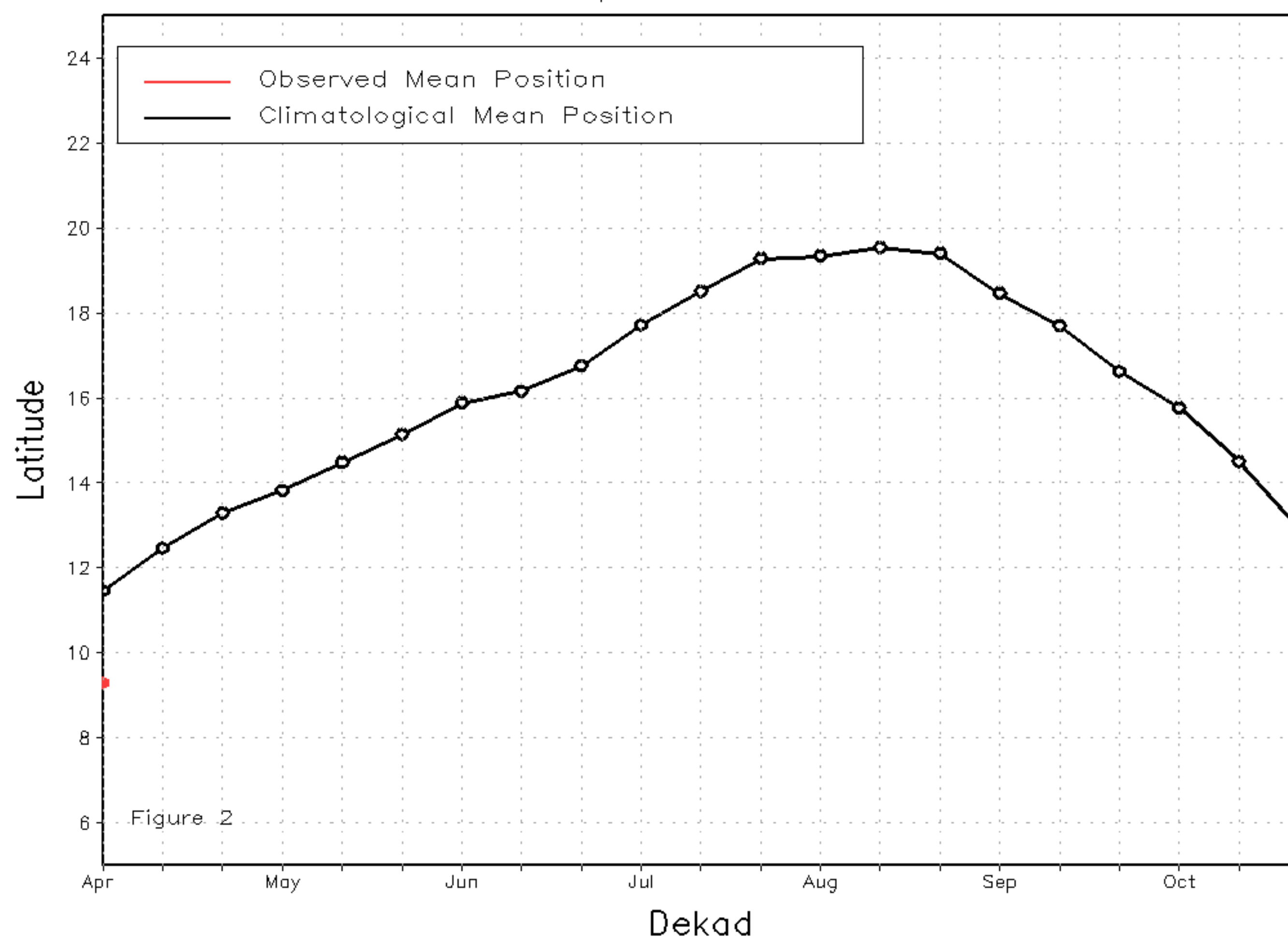
From April 01-10, the ITF is located along the Gulf of Guinea countries. This position will be the starting point for this year ITF watch. The mean western portion of the ITF was approximated at 9.3 degrees N which explains the seasonal rainfall received over Cote d'Ivoire and the southern part of Nigeria. The mean eastern portion of the ITF was located at 6.9 degrees N, which was to the south of the climatological position by 2 degrees. Figure 1 displays the current position of the ITF relative to the long-term average position during the first dekad of April and its previous position during the 3rd dekad of October. Figures 2 and 3 are time series, illustrating the latitudinal values of the western and eastern portions of the ITF, respectively, and their seasonal evolutions since April, 2020.

Current vs. Normal Dekadal ITF Position
and RFE Accumulated Precipitation (mm)

April 2021, Dekad 1



Mean Western Portion of the ITF: Averaged 10W to 10E
As of: April 2021, Dekad 1



Mean Eastern Portion of the ITF: Averaged 20E to 35E
As of: April 2021, Dekad 1

