



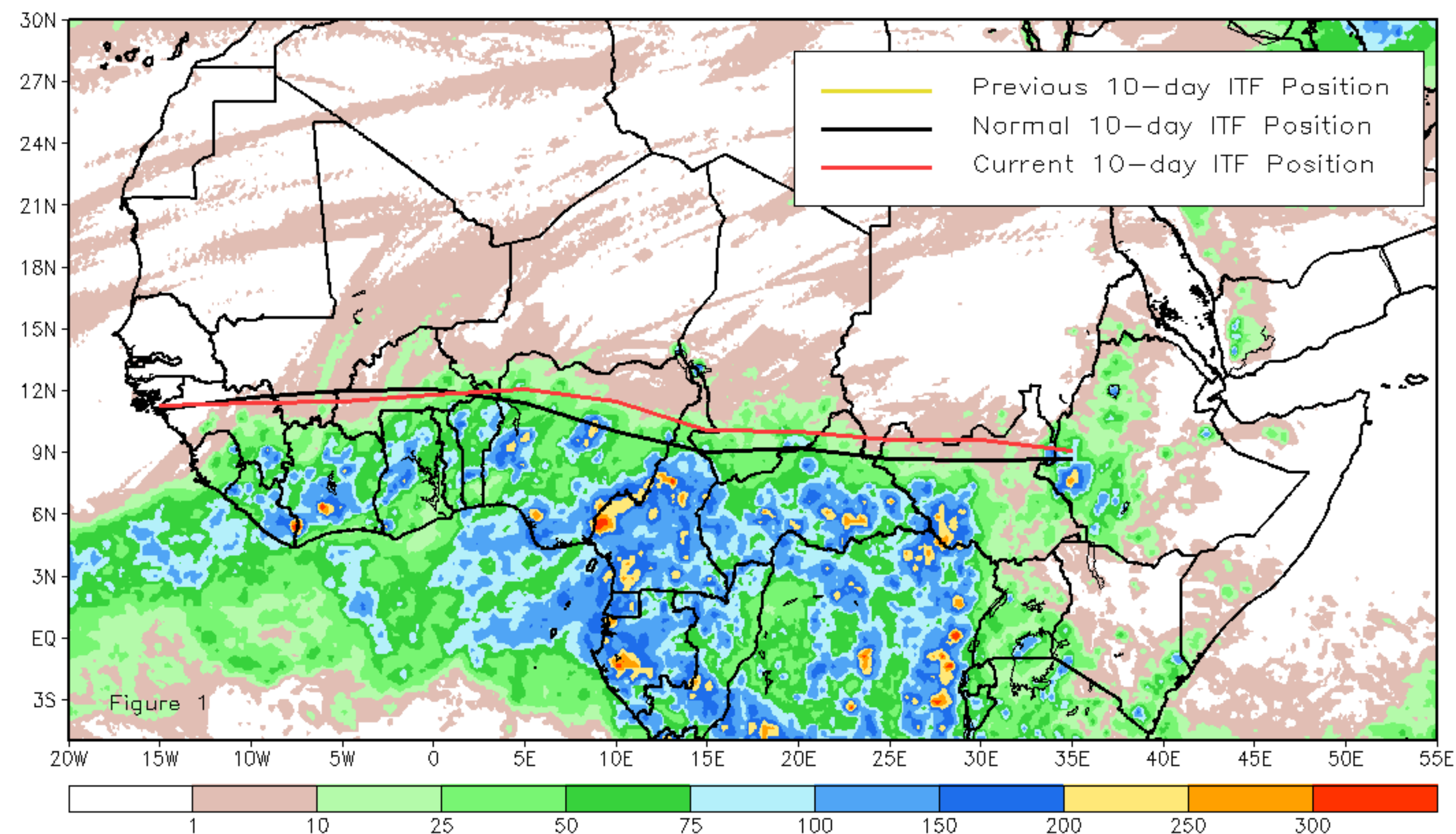
CPC Africa Desk InterTropical (ITF) Front Analysis

April 2020, Dekad 1

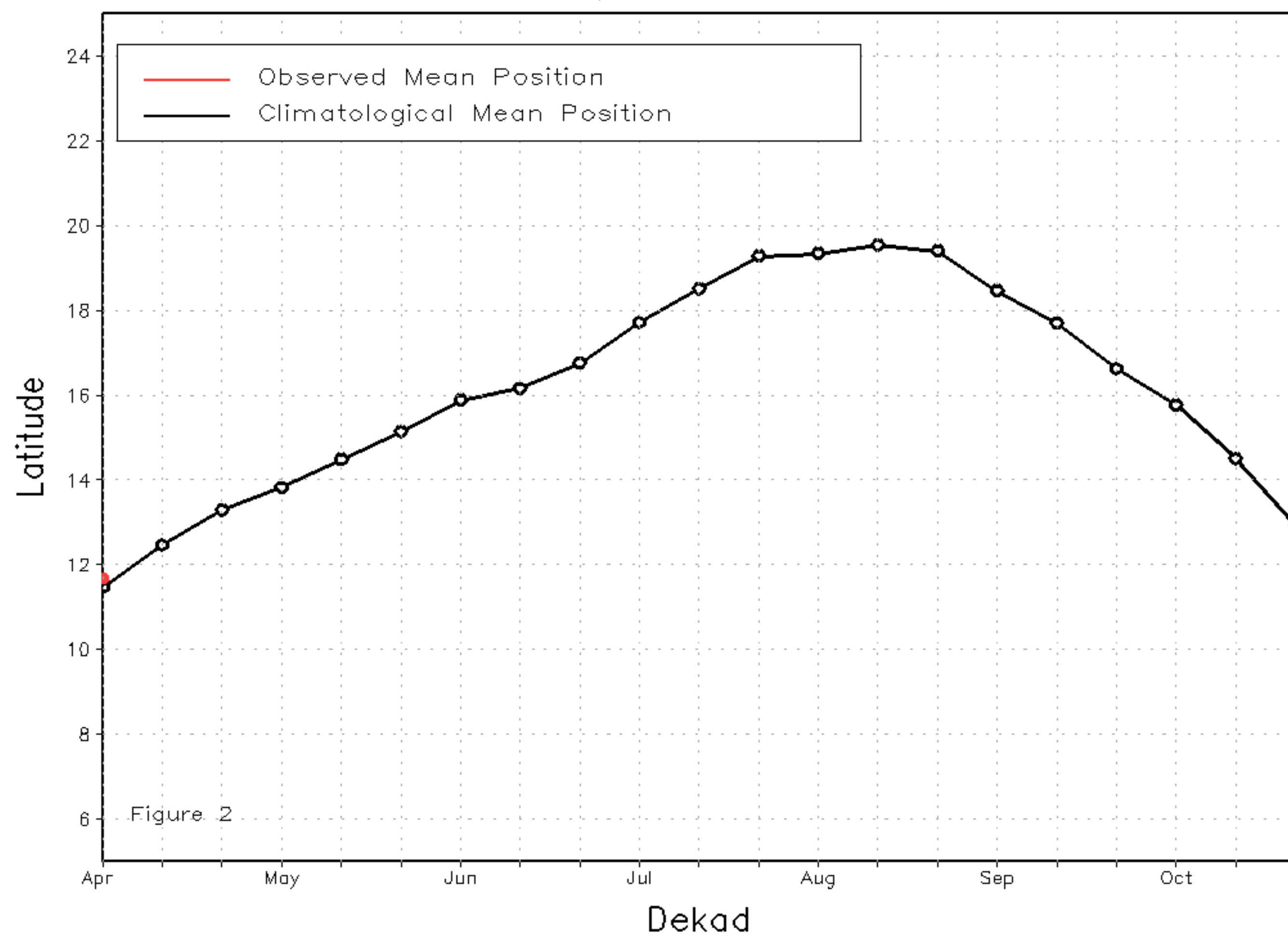
Discussion:

From April 1-10, the western end of the ITF was near its climatological mean position, while from Nigeria eastward it was slightly north of its climatological mean. The mean position of the western portion of the ITF between 10W-10E is approximated at 11.7 degrees N. this was north of its climatological mean by 0.3 degrees. The mean position of the eastern portion of the ITF between 20E-35E is 9.6 degrees N. This puts the ITF location above the average position of 8.8 degrees N. Coinciding with ITF behaviour, rainfall was generally near or greater than average across western and eastern Africa in early April. Figure 1 shows the current position of the ITF relative to the long-term average position during the 1st dekad of April. Figures 2 and 3 are time series, illustrating the latitudinal values of the western and eastern portions of the ITF, respectively, and their seasonal evolutions since April, 2019.

Current vs. Normal Dekadal ITF Position
and RFE Accumulated Precipitation (mm)
April 2020, Dekad 1



Mean Western Portion of the ITF: Averaged 10W to 10E
As of: April 2020, Dekad 1



Mean Eastern Portion of the ITF: Averaged 20E to 35E
As of: April 2020, Dekad 1

