



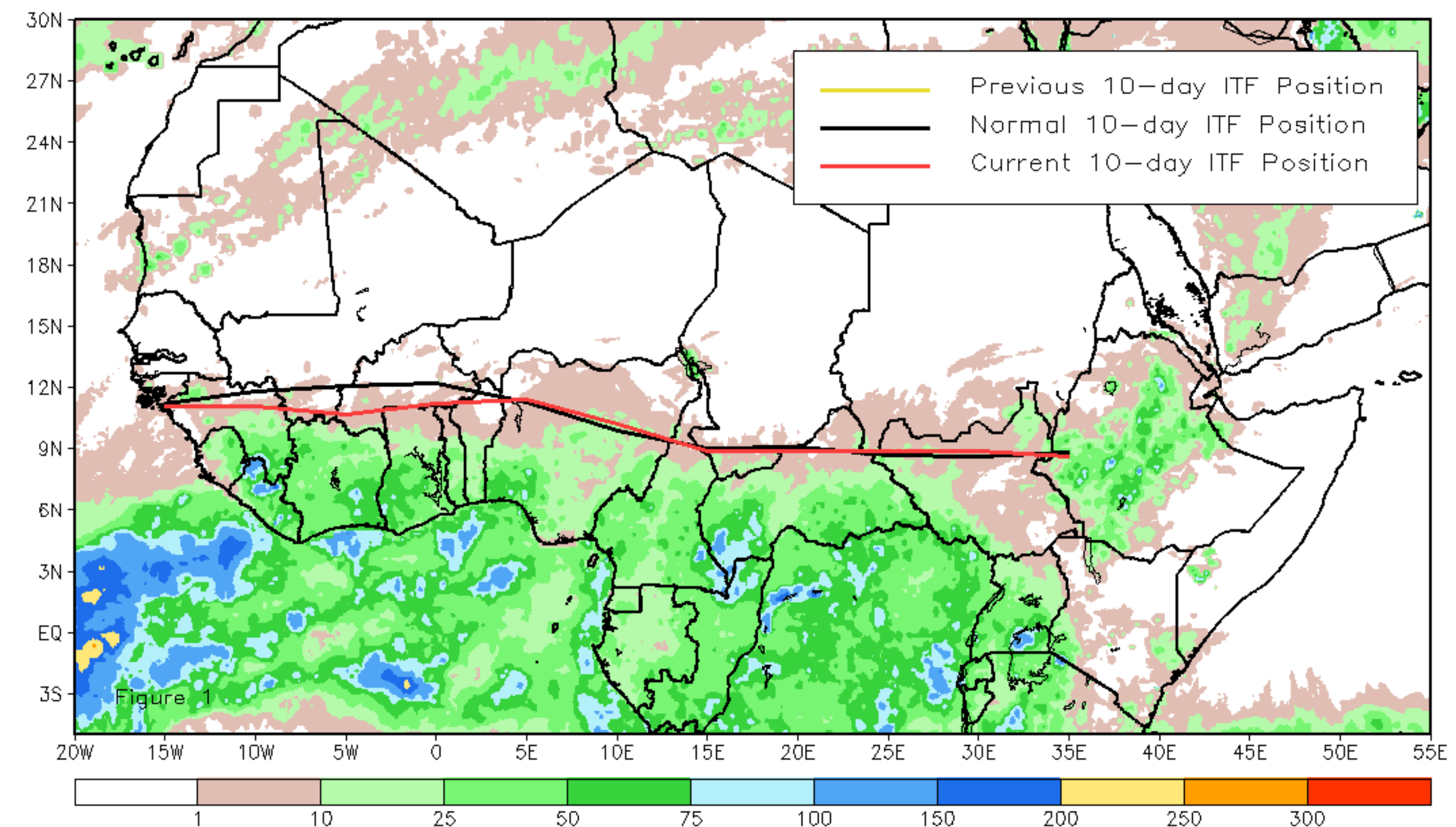
CPC Africa Desk InterTropical (ITF) Front Analysis

April 2019, Dekad 1

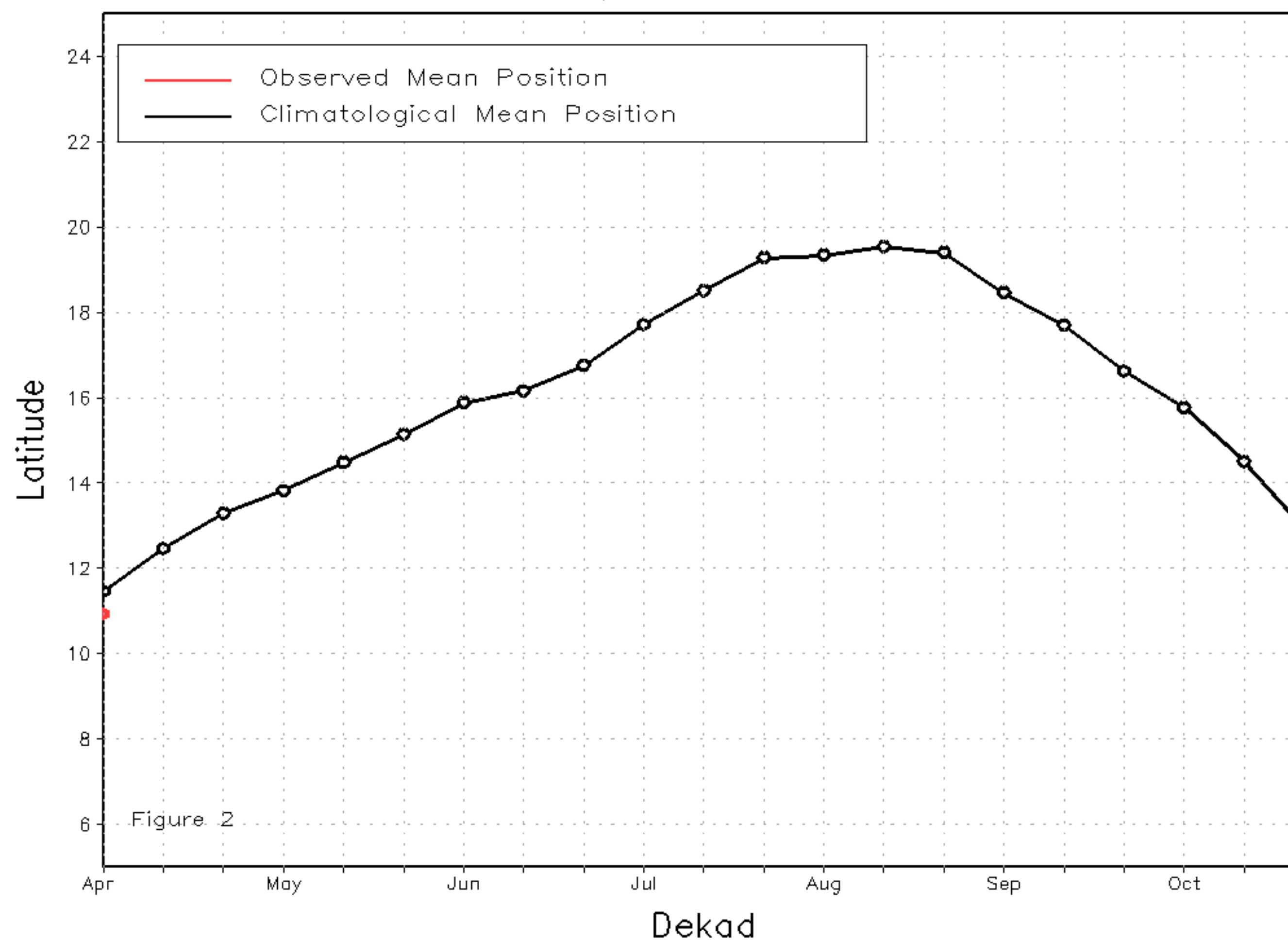
Discussion:

From April 1-10, the ITF was located very near its climatological normal position eastward of 5E longitude during the first dekad of the analysis season. Its location was also south of its position in the west and slightly south of its position in the east, during last year (2018). The mean western (10W-10E) portion of the ITF was approximated at 10.9N, south of its climatological mean position of 11.5 degrees. The position of the ITF a few degrees south of its average position has kept rainfall a bit more confined to coastal regions of the Gulf of Guinea countries than usual. The mean eastern (20E-35E) portion of the ITF was approximated at 8.8N, residing exactly along its climatological mean position. Figure 1 shows the current position of the ITF compared to the climatological position during the 1st dekad of April. Figures 2 and 3 are time series, illustrating the latitudinal values of the western and eastern portions of the ITF, respectively, and their seasonal evolutions since April, 2019.

Current vs. Normal Dekadal ITF Position
and RFE Accumulated Precipitation (mm)
April 2019, Dekad 1



Mean Western Portion of the ITF: Averaged 10W to 10E
As of: April 2019, Dekad 1



Mean Eastern Portion of the ITF: Averaged 20E to 35E
As of: April 2019, Dekad 1

