



CPC Africa Desk InterTropical (ITF) Front Analysis

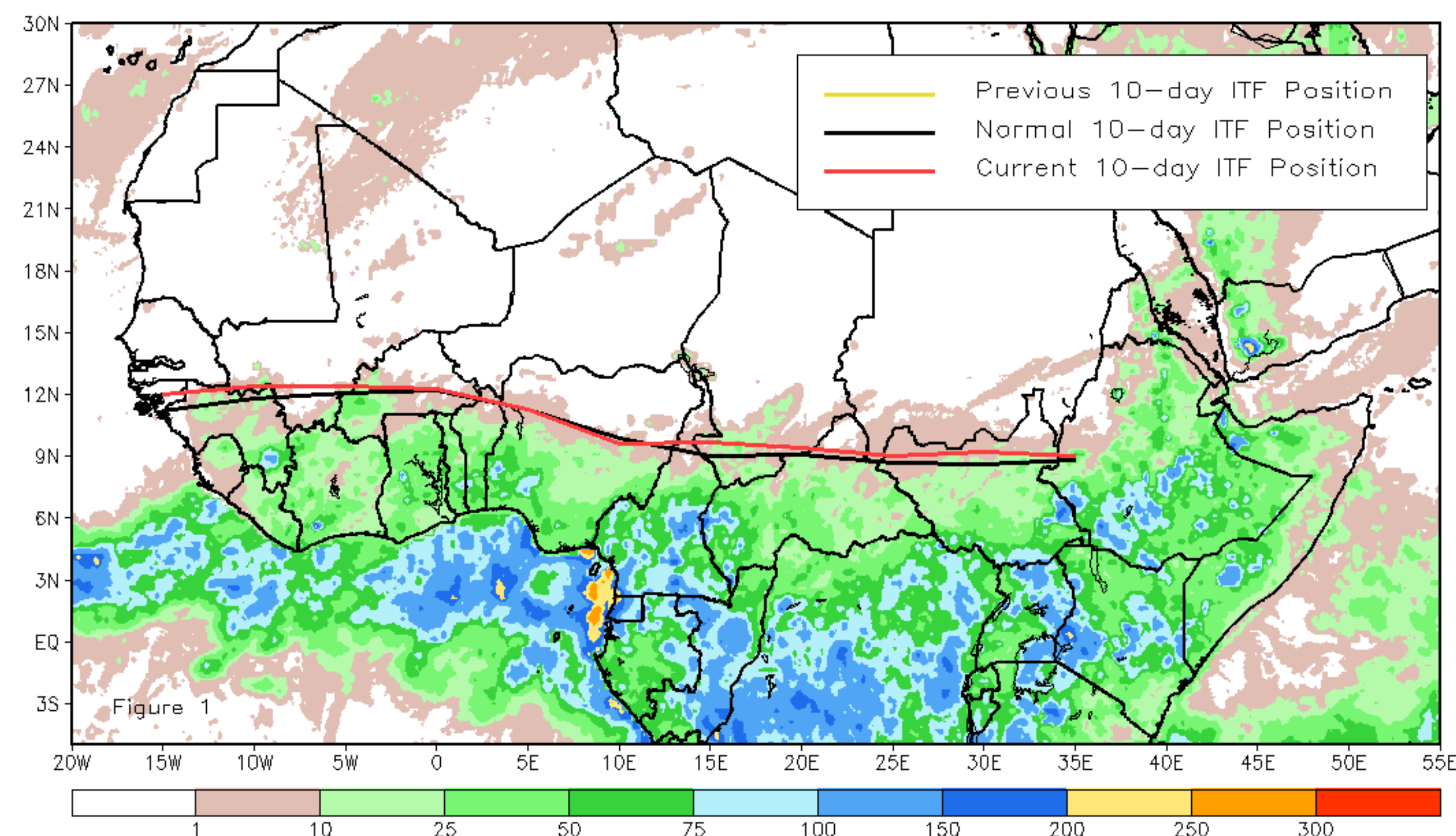
April 2018, Dekad 1

Discussion:

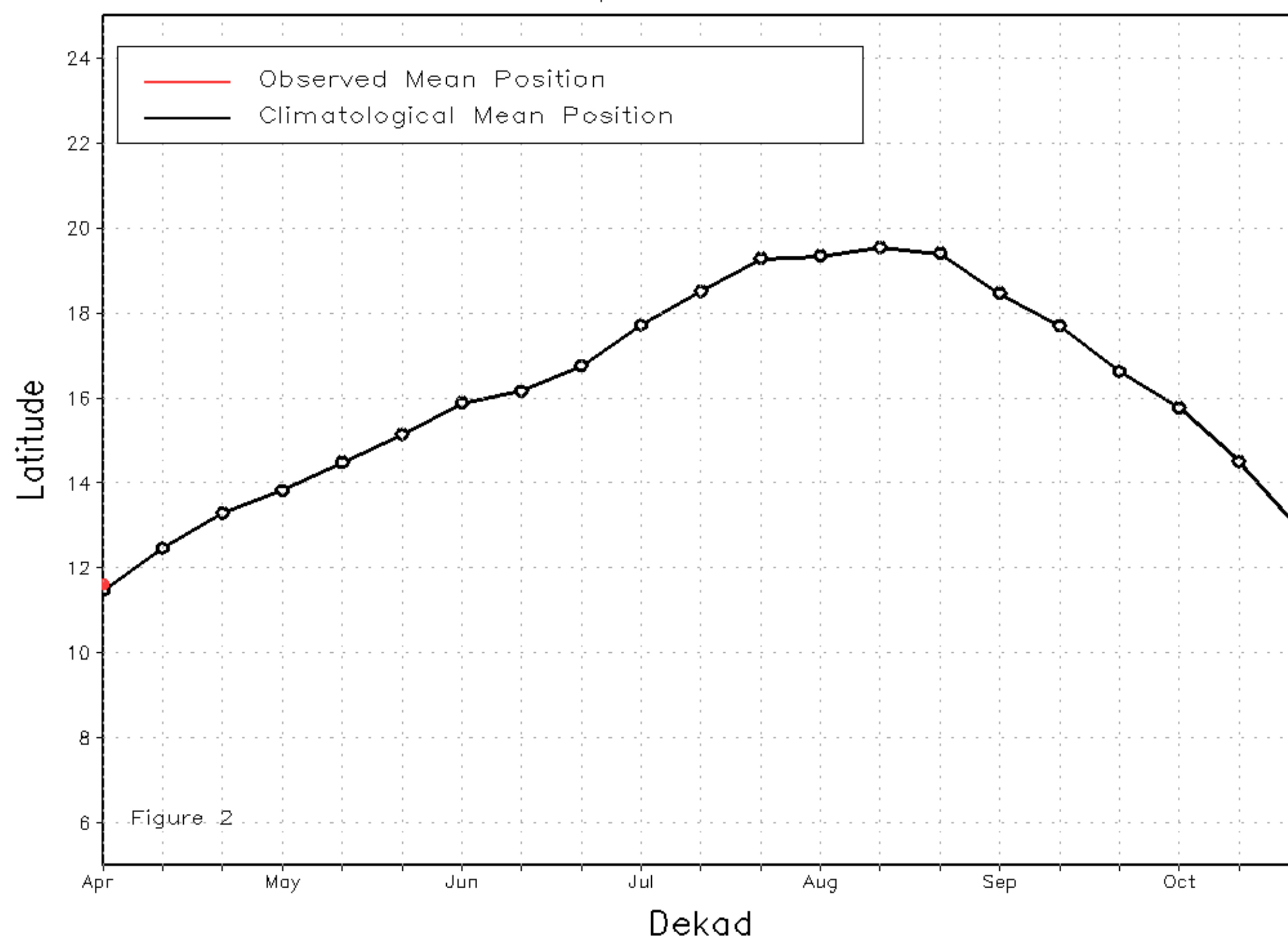
During the 1st dekad of April 2018, the early seasonal ITF position was largely near its climatological normal position over both western and eastern portions of Africa. The mean western (10W-10E) portion of the ITF was approximated at 11.6 degrees N, resting slightly above the mean (11.5N) position during the this time of year. This modest positive anomaly was associated with early seasonal rainfall across parts of Guinea and western Burkina Faso. The mean eastern (20E-35E) portion of the ITF was approximated at 9.1 degrees N, and also was slightly above the climatological normal position (8.8N) for early April. It is noted that the current years mean position in the east is identical to that of last year during early April. Figure 1 shows the current position of the ITF relative to the mean climatological position across Africa during the 1st dekad of April (previous dekadal position not yet shown). Figures 2 and 3 are time series illustrating the mean latitudinal values of the western and eastern portions of the ITF, respectively, and their seasonal evolution compared to climatology since April, 2018.

Current vs. Normal Dekadal ITF Position
and RFE Accumulated Precipitation (mm)

April 2018, Dekad 1



Mean Western Portion of the ITF: Averaged 10W to 10E
As of: April 2018, Dekad 1



Mean Eastern Portion of the ITF: Averaged 20E to 35E
As of: April 2018, Dekad 1

