



CPC Africa Desk InterTropical (ITF) Front Analysis

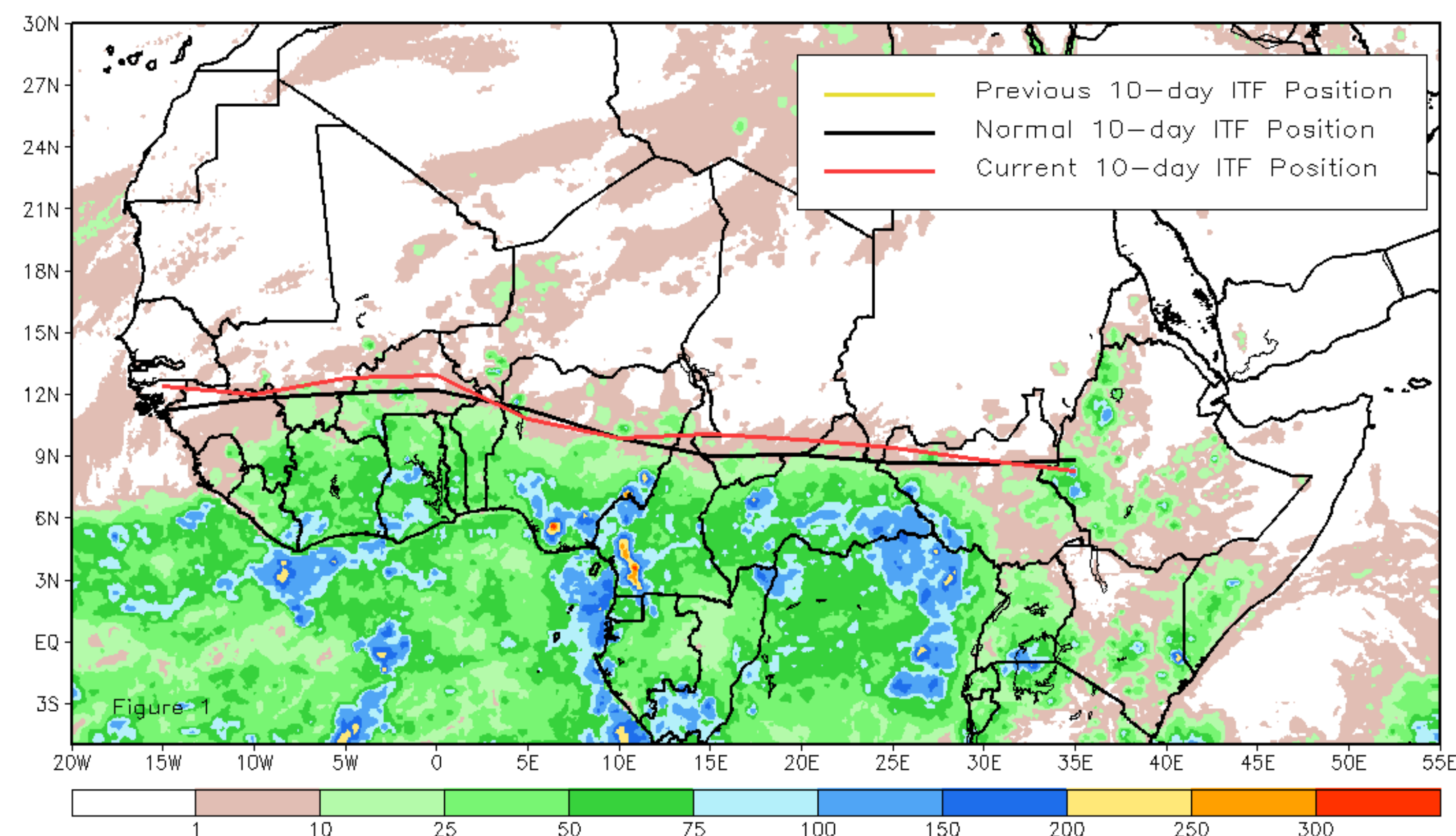
April 2017, Dekad 1

Discussion:

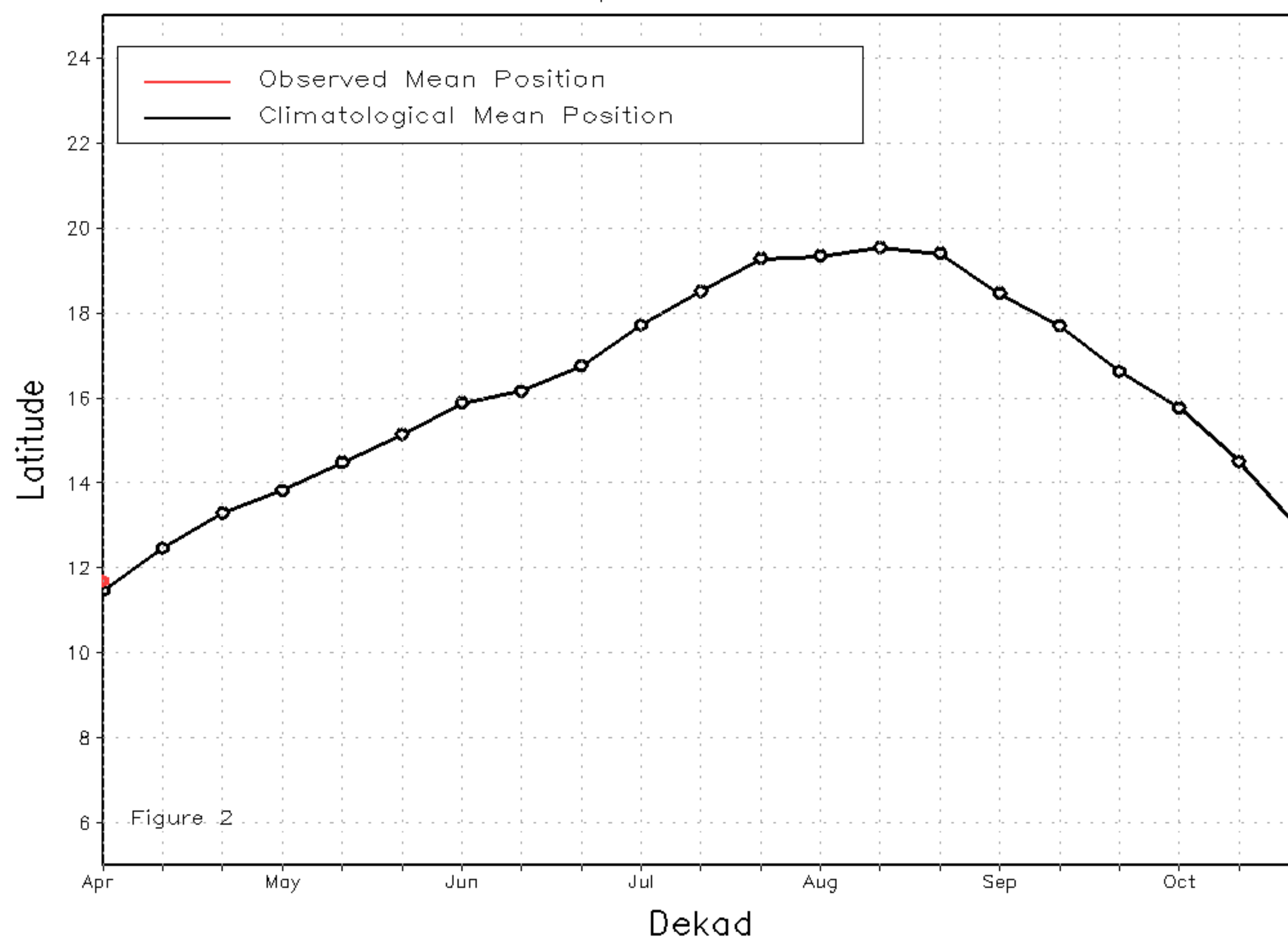
During the first dekad of April (April 1-10), the position of the ITF generally remained near and slightly above-average throughout several regions in western and eastern Africa. The mean western portion of the ITF (10W-10E) was approximated at 11.7N, and was notably highest over the climatological normal position across parts of Burkina Faso and southern Mali, where above-average rainfall was recorded. The mean eastern portion of the ITF (20E-35E) was approximated at 9.1N, also ahead of the normal climatological position (8.8N). Figure 1 shows the current position of the ITF relative to its climatological position during the 1st dekad of April. Figures 2 and 3 are time series illustrating the mean latitudinal values of the western and eastern portions of the ITF, respectively, and their evolutions since April, 2017.

Current vs. Normal Dekadal ITF Position
and RFE Accumulated Precipitation (mm)

April 2017, Dekad 1



Mean Western Portion of the ITF: Averaged 10W to 10E
As of: April 2017, Dekad 1



Mean Eastern Portion of the ITF: Averaged 20E to 35E
As of: April 2017, Dekad 1

