



CPC Africa Desk InterTropical (ITF) Front Analysis

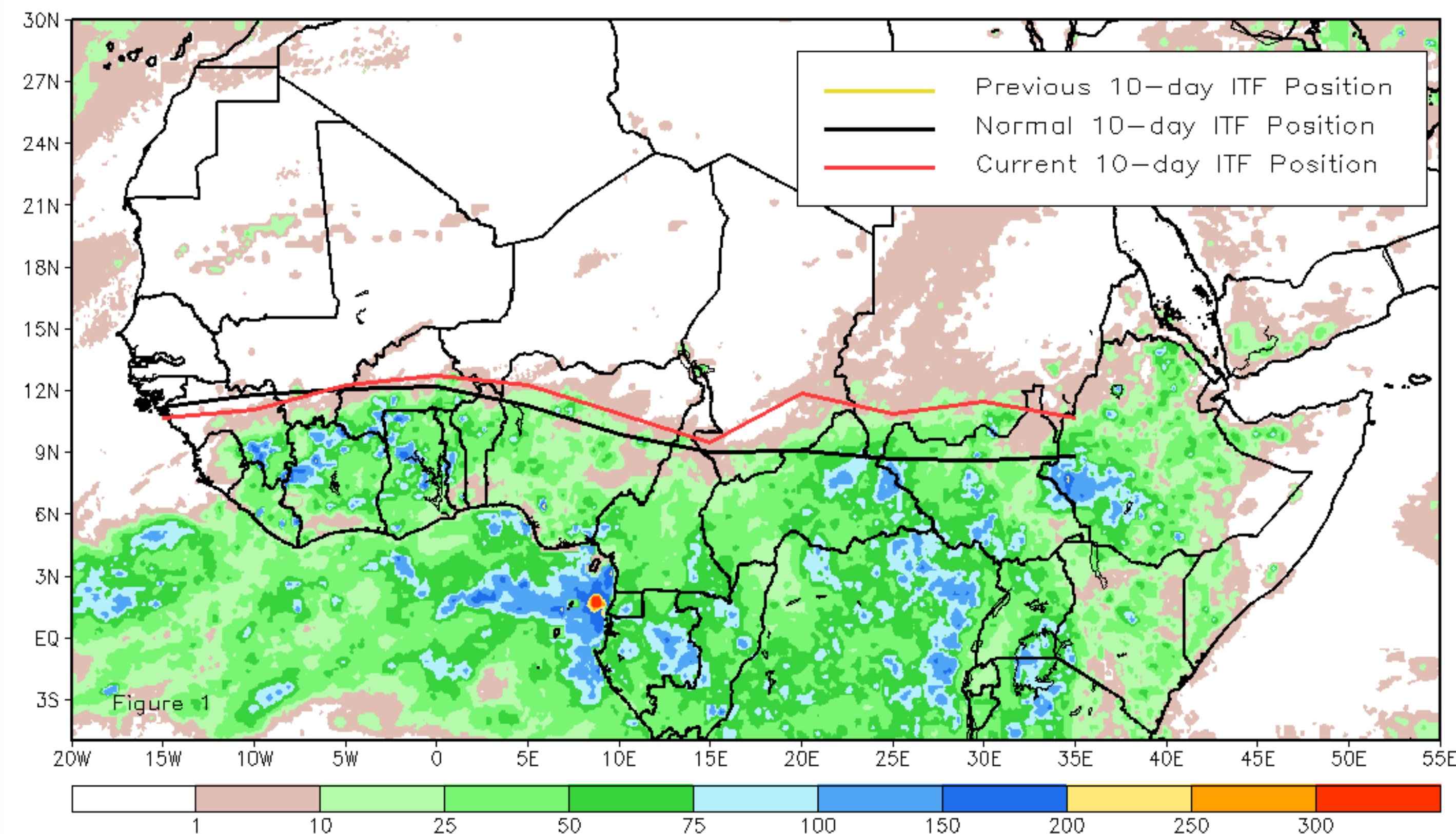
April 2014, Dekad 1

Discussion:

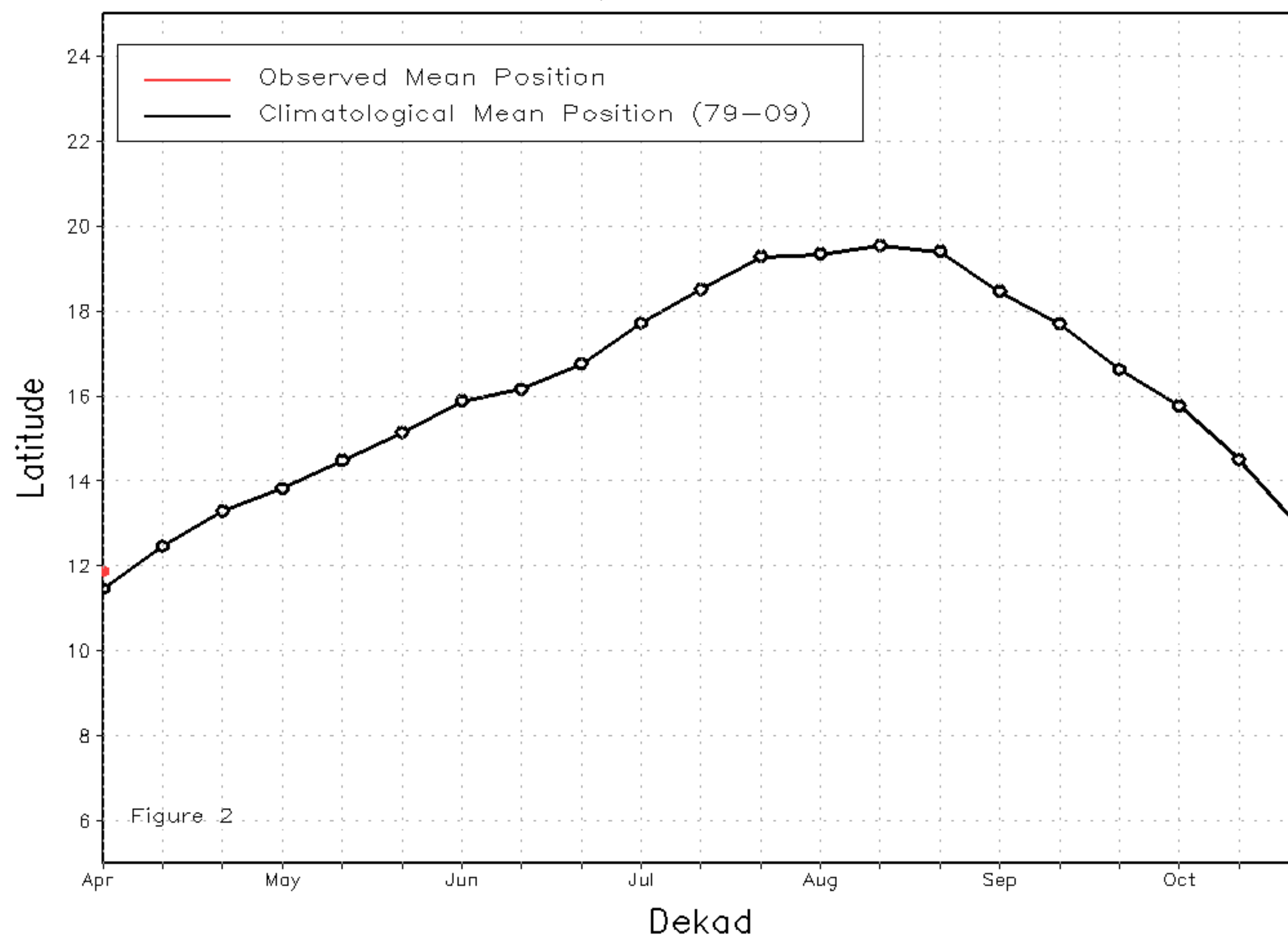
From April 1-10, 2014, the ITF experienced a significant northward movement, bringing above-average rains across portions of the Gulf of Guinea and Eastern Africa. The mean western (10W-10E) portion of the ITF was positioned along 11.9N, which was to the North of the average position by 0.4 degree. The strong southerly flow brought wetter than average conditions throughout eastern Guinea, Cote d'Ivoire, and a portion of the ITF approximated 11.2N and led the mean position by 2.4 degrees. This resulted in rainfall surpluses over southern Sudan, South Sudan, and southwestern Ethiopia during the period. Figure 1 displays the current ITF position relative to its long-term average position during the first dekad of April. Figures 2 and 3 are time series, illustrating the mean latitudinal values of the western and eastern portion of the ITF, respectively, and their evolutions since April, 2014.

Current vs. Normal Dekadal ITF Position
and RFE Accumulated Precipitation (mm)

April 2014, Dekad 1



Mean Western Portion of the ITF: Averaged 10W to 10E
As of: April 2014, Dekad 1



Mean Eastern Portion of the ITF: Averaged 20E to 35E
As of: April 2014, Dekad 1

