



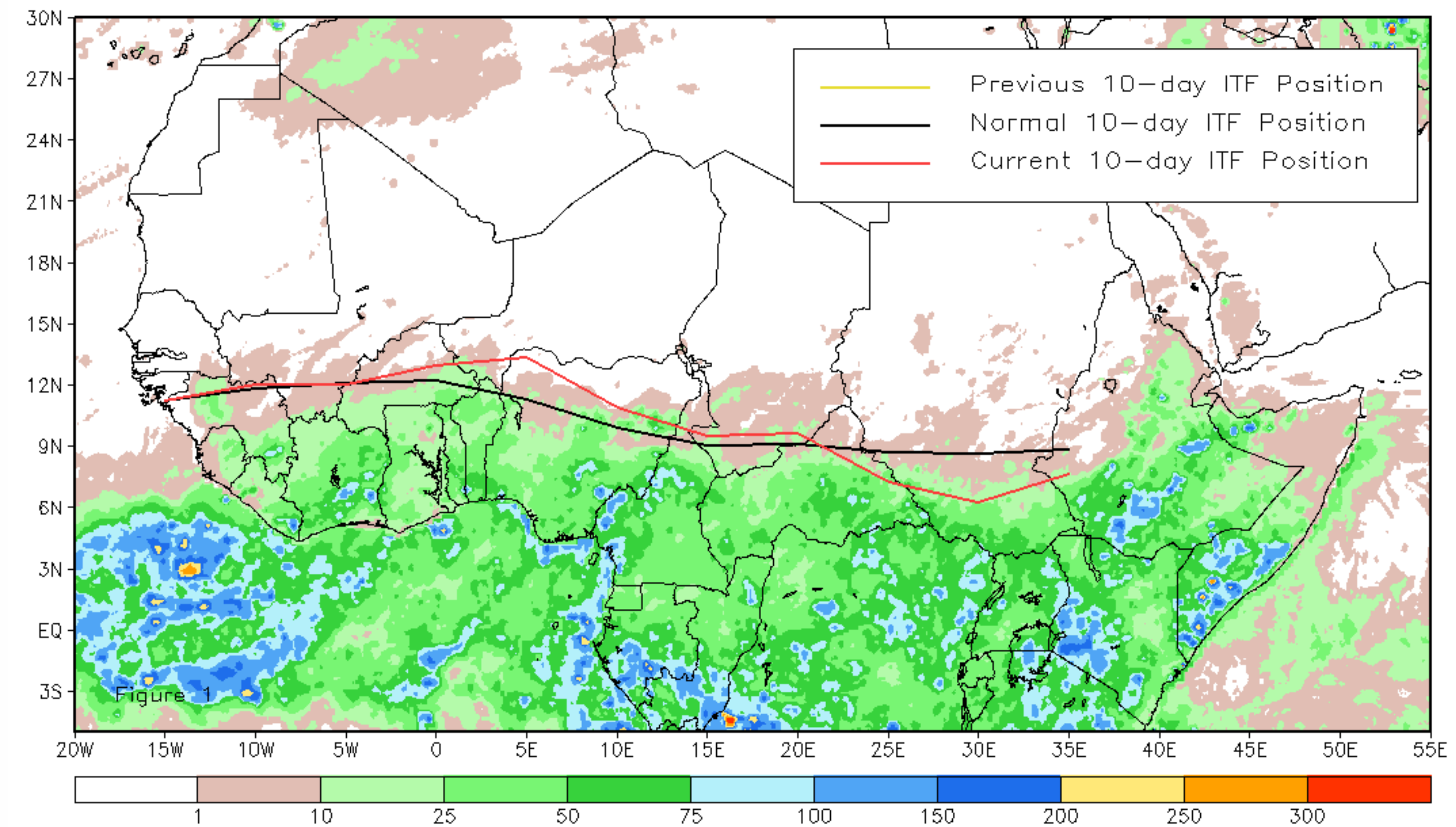
# CPC Africa Desk InterTropical (ITF) Front Analysis

## April 2013, Dekad 1

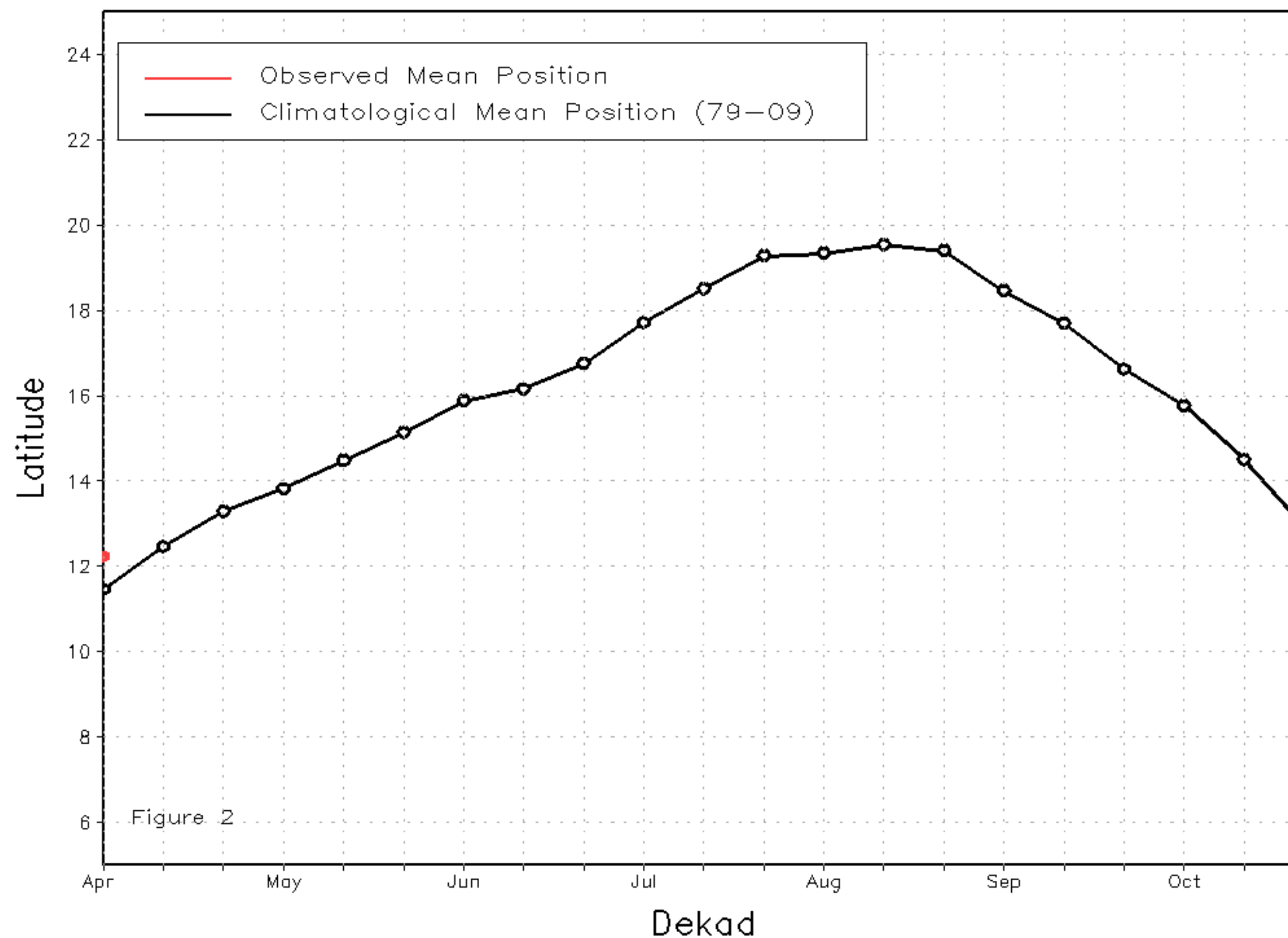
### Discussion:

From April 1 - 10, 2013, the ITF continued its seasonal northward progression across Africa. However, while the ITF western portion advanced further north by 0.7 degree relative to the mean climatological position, its eastern segment lagged the long-term average position by as much as 1.1 degrees. Across the Gulf of Guinea, strong southerly flow helped to enhance low-level convergence further north, resulting in increased rainfall across the bimodal regions of West Africa, including Togo and Benin. Conversely, anomalous anticyclonic circulation over northern Sudan contributed to the blocking, hence the suppression of rainfall across the eastern portion of the ITF. Figure 1 shows the current ITF position relative to its long-term average position during the first dekad of April. Figures 2 and 3 are time series, illustrating the mean latitudinal values of the western and eastern portion of the ITF, respectively, and their evolutions since the start of April.

Current vs. Normal Dekadal ITF Position  
and RFE Accumulated Precipitation (mm)  
April 2013, Dekad 1



Mean Western Portion of the ITF: Averaged 10W to 10E  
As of: April 2013, Dekad 1



Mean Eastern Portion of the ITF: Averaged 20E to 35E  
As of: April 2013, Dekad 1

