



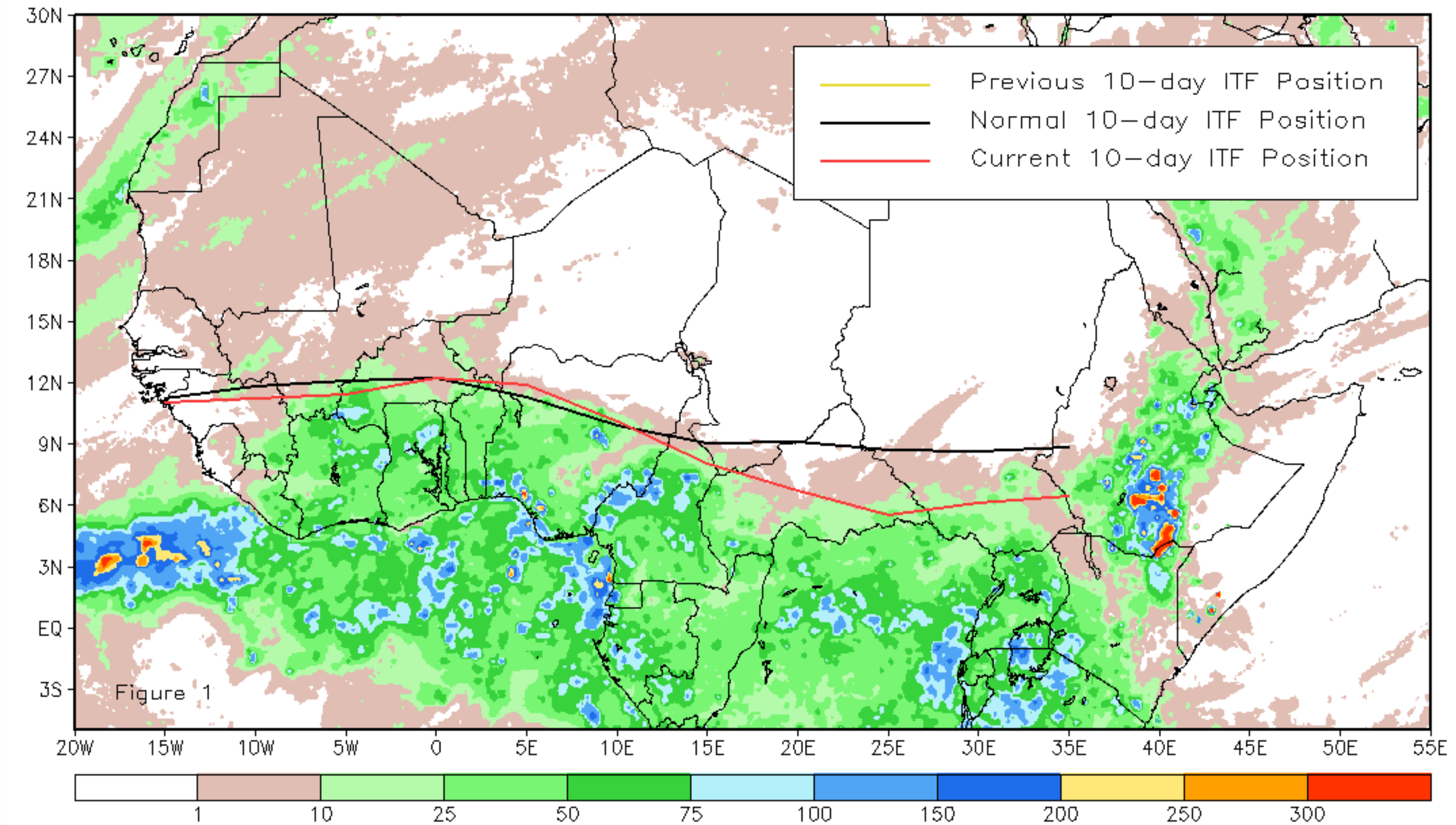
# CPC Africa Desk InterTropical (ITF) Front Analysis

## April 2012, Dekad 1

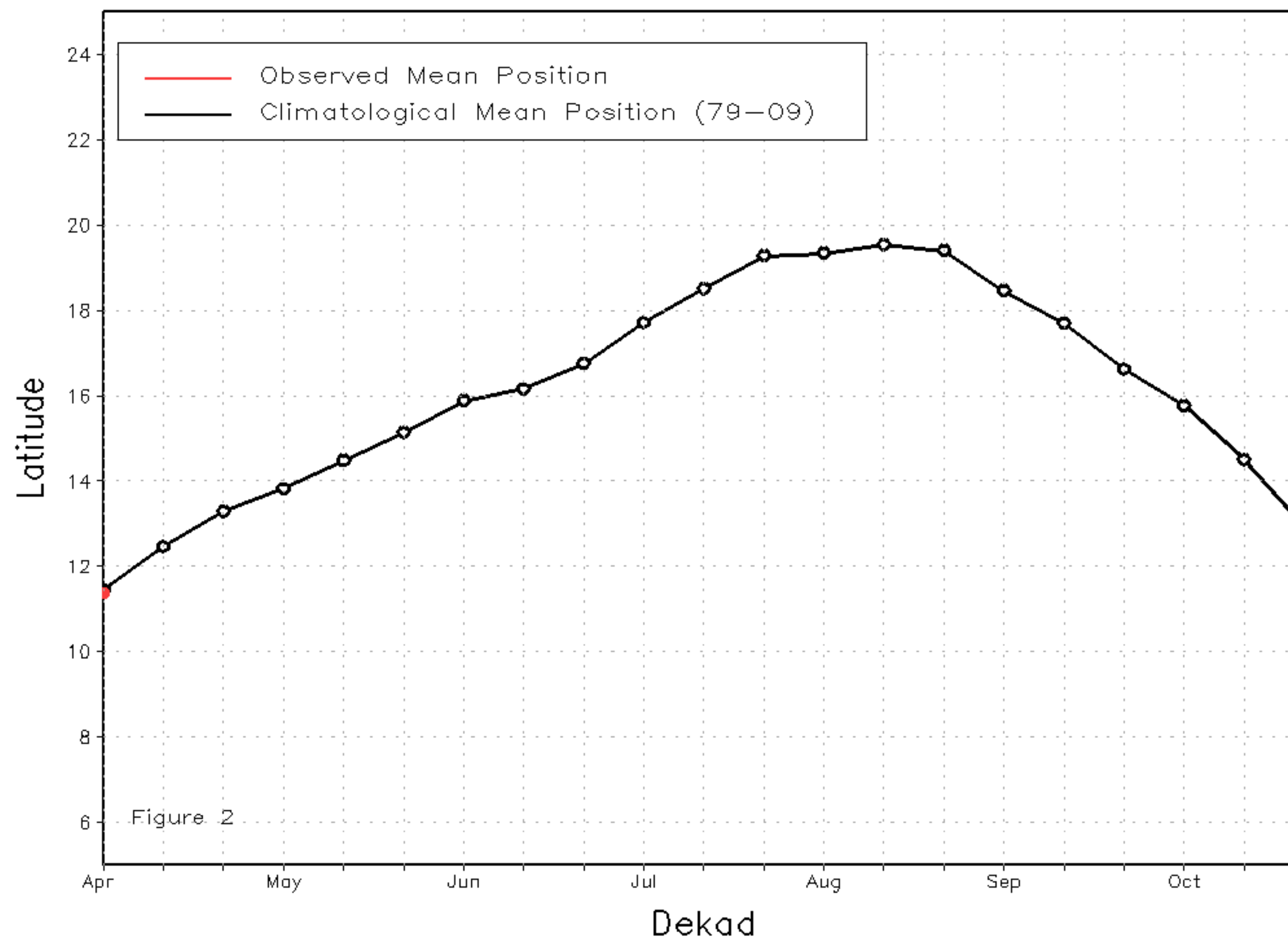
### Discussion:

From April 1-10, 2012, the ITF experienced an asymmetric northward progression, with its western portion being closer to the average position as opposed to its eastern counterpart, which lagged behind the normal position. The mean western portion of the ITF was located approximately at 11.4 degrees North, which was 0.1 degrees south of the climatology mean. In contrast, the eastern portion of the ITF was approximated at only 6.2 degrees North, which was behind the climatology mean position by 2.6 degrees. Strong northerly to northeasterly winds over Sudan have contributed to the blocking of the poleward advancement of the ITF in the region. Figure 1 shows the current ITF position relative to the climatological average position for the first dekad of April. Figures 2 and 3 are time series, illustrating the latitudinal mean of the western and eastern portion of the ITF, respectively, and their evolutions since the start of April.

Current vs. Normal Dekadal ITF Position  
and RFE Accumulated Precipitation (mm)  
April 2012, Dekad 1



Mean Western Portion of the ITF: Averaged 10W to 10E  
As of: April 2012, Dekad 1



Mean Eastern Portion of the ITF: Averaged 20E to 35E  
As of: April 2012, Dekad 1

