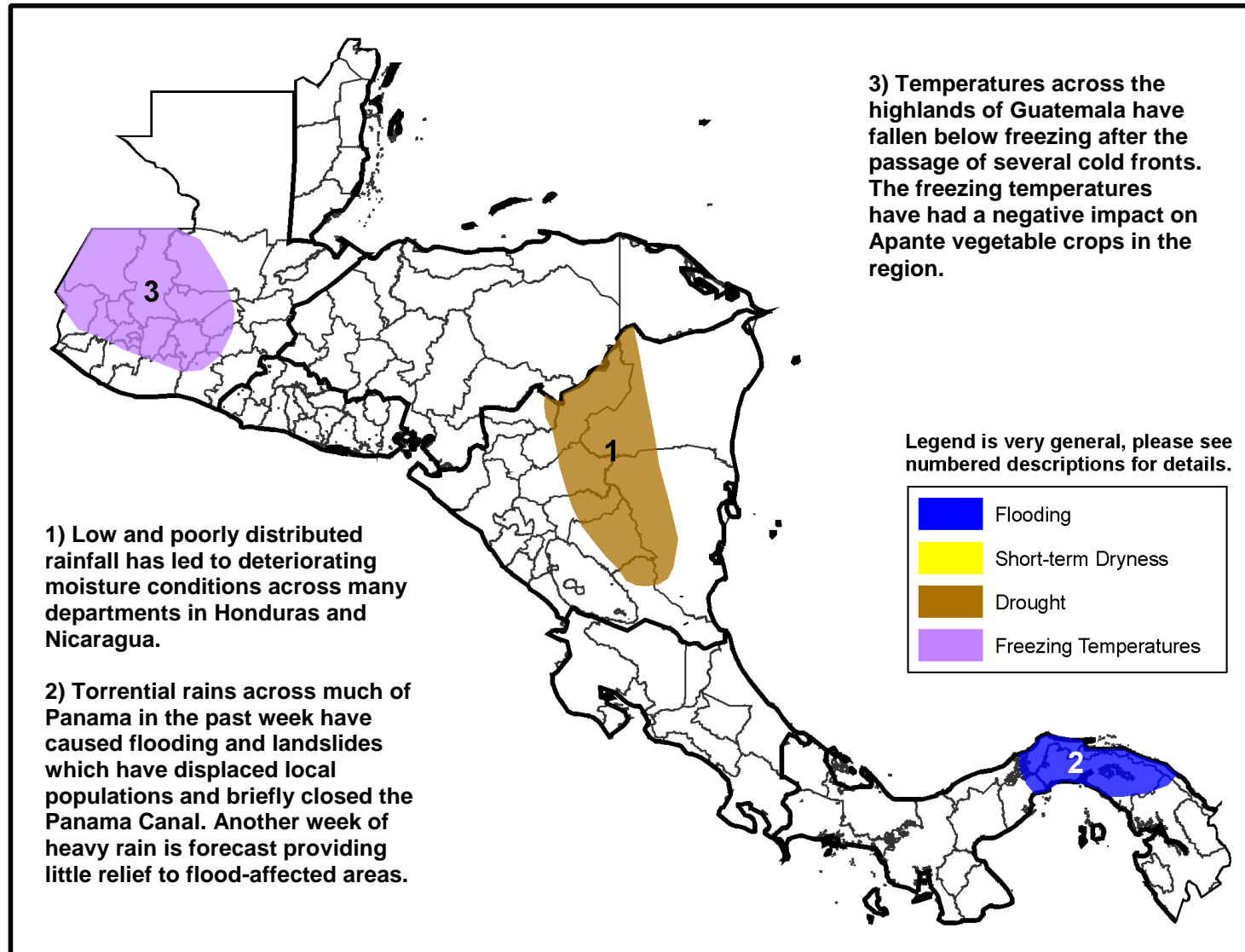


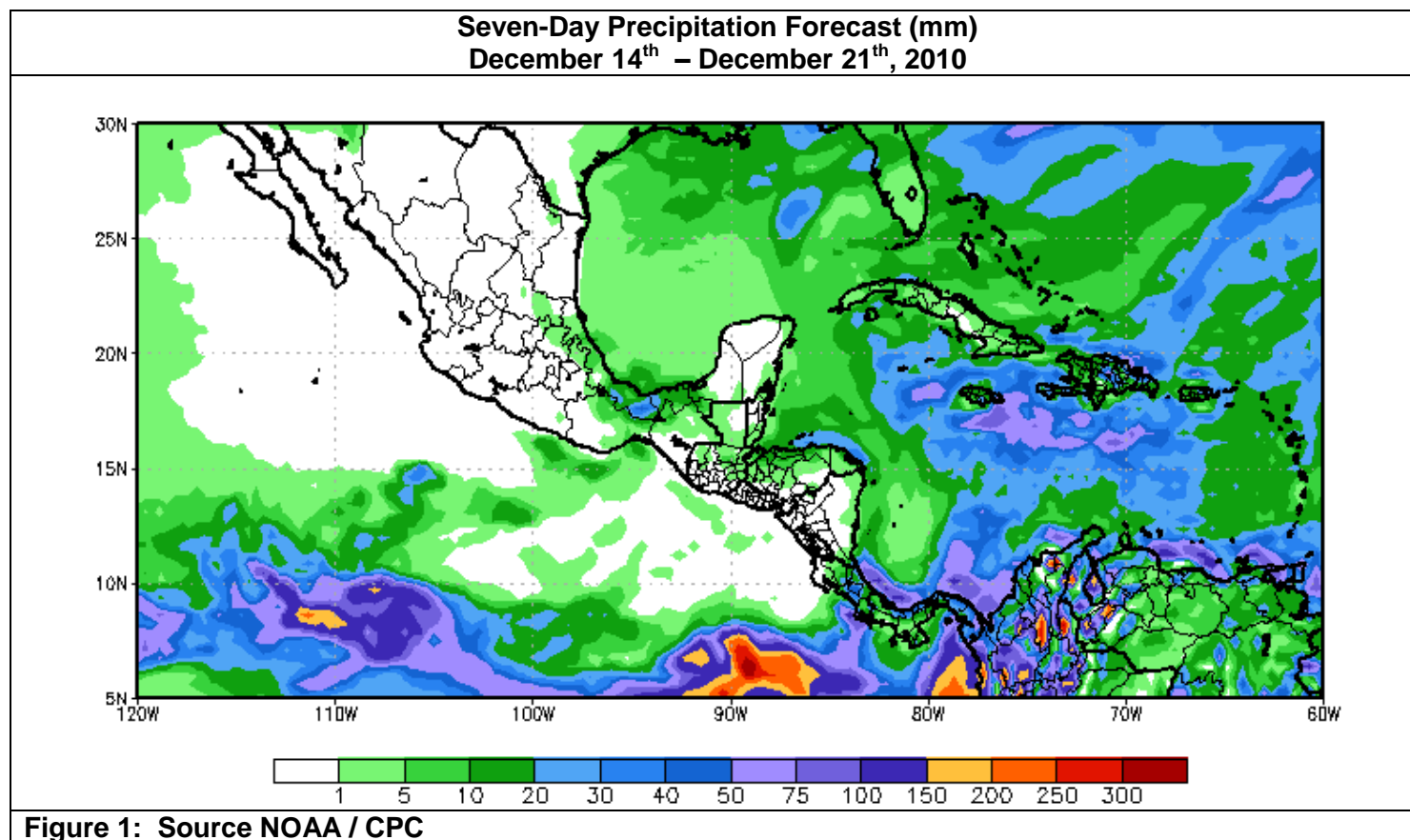
## The USAID MFEWS Weather Hazards Impacts Assessment for Central America December 16 – December 22, 2010

- Heavy rain affected Panama while seasonal dryness and freezing temperatures occurred across northern Central America.



## Abundant rainfall across Panama caused flooding while freezing temperatures affected Guatemala.

During the past week, dry conditions persisted across most of northern Central America while heavy rainfall (> 150 mm) was observed across Panama in the southern Caribbean. The copious amounts of rain that fell across Panama during the past seven days have caused the brief closure of the Panama Canal, flooding and landslides which have displaced local populations. This was the third consecutive week abundant rains were focused in the southern Caribbean. Locations to the north, including Costa Rica and the Atlantic coastline of Nicaragua and Honduras observed moderate precipitation (10-30 mm). The lighter rainfall totals than the previous week were a welcomed change across portions of Costa Rica, especially the Limon department which had seen previous weeks of heavy rain cause landslides and flooding. The lack of rainfall across Nicaragua, though, has increased rainfall deficits to between 50 and 100 mm during the past thirty days and has negatively impacted cropping areas in central and eastern portions of the country. Further north, freezing temperatures caused by northerly winds after the passage of a couple of cold fronts have negatively impacted crops located across the highlands of Guatemala. Elsewhere, seasonal dryness prevailed across Honduras, El Salvador and Guatemala. For the next seven days, models predict similar conditions as the past week. Heavy rainfall (> 50 mm) is forecast across the southern Caribbean where flooding has recently occurred while moderate rainfall (15-40 mm) is expected to affect the Atlantic coastline of Honduras. Locations in the highlands of Guatemala are also susceptible to freezing temperatures during the next week.



MFEWS is a USAID-funded activity whose purpose is to provide objective information about food security conditions. Its views are not necessarily reflective of those of USAID or the U.S. Government. The MFEWS weather hazards assessment process and products include participation by MFEWS field and home offices, NOAA-CPC, USGS, USDA, NASA, and a number of other national and regional organizations in the countries such as, INETER of Nicaragua, Meteorological Service of Honduras, IMN of Costa Rica, INSIVUMEH of Guatemala, ETESA of Panama, NMS of Belize and SNET of El Salvador. Questions or comments about this product may be directed to Wassila.Thiaw@noaa.gov or 1-301-763-8000 x7566. Questions about the USAID MFEWS activity may be directed to Gary Eilerts, USAID Program Manager for MFEWS, 1-202-219-0500 or geilerts@usaid.gov.