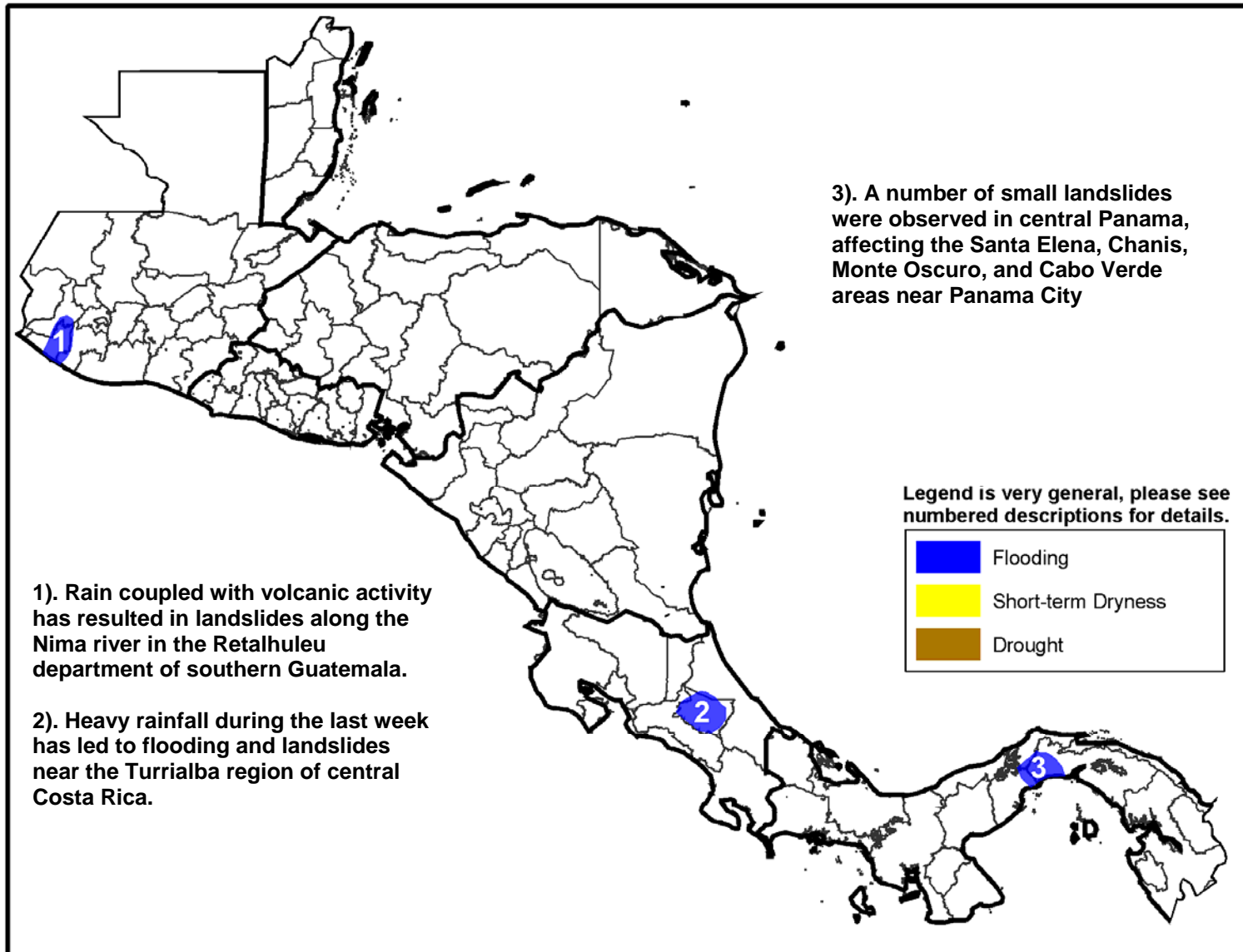


## The USAID MFEWS Weather Hazards Impacts Assessment for Central America May 6 – May 12, 2010

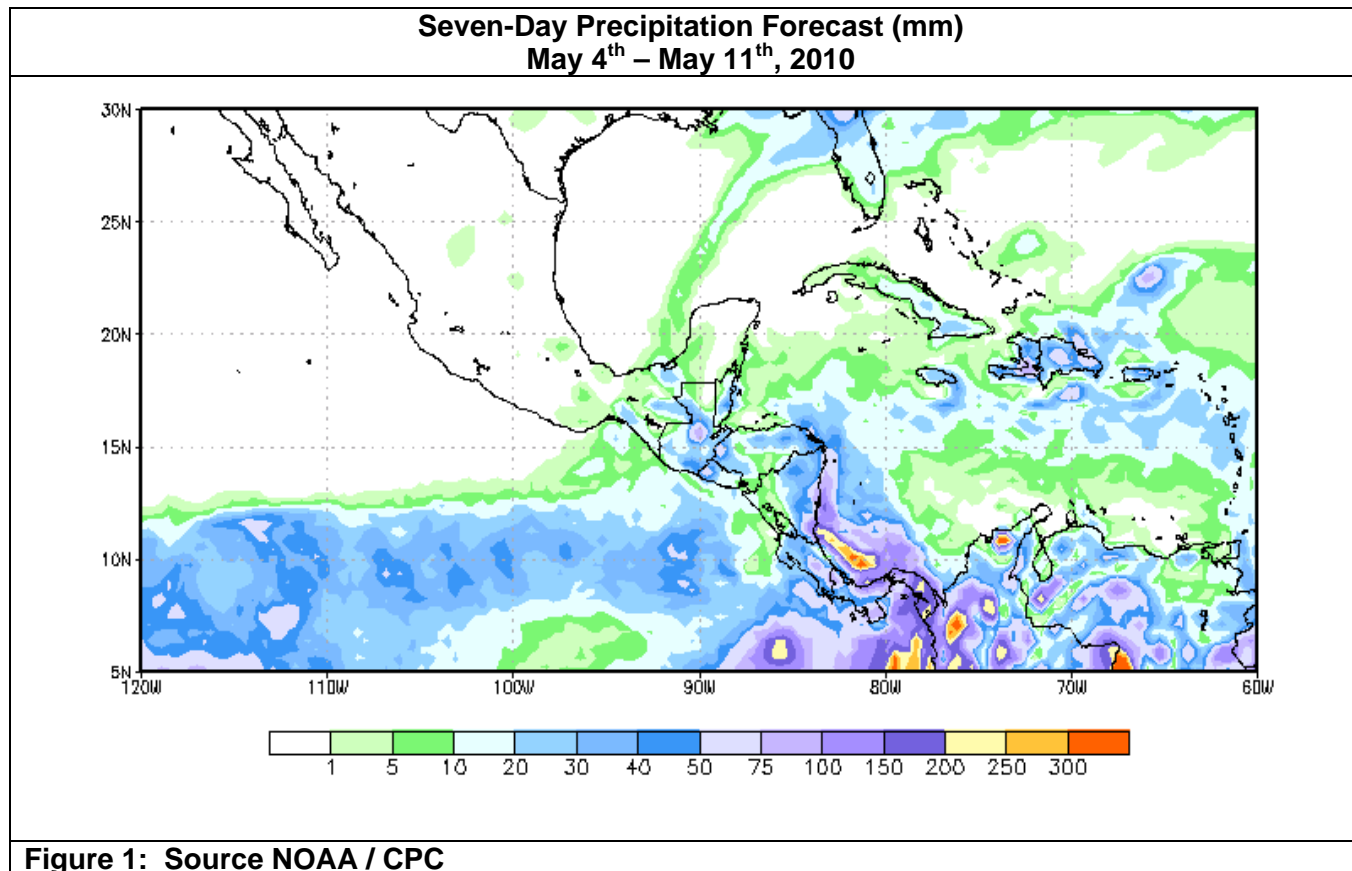
- Torrential amounts of rainfall were received throughout many areas in Central America during the last week. This has resulted in localized flooding and landslides for local areas in Guatemala, Costa Rica and Panama.



## Primera seasonal rains likely to have begun.

In the last seven days, torrentially heavy rains (>200mm) were received across much of Central America as this likely marks the beginning of the Primera rains season. In Guatemala, the highest rainfall amounts were limited to the north, with weekly rainfall accumulations ranging between 75-100 mm observed over the Izabal, Alta Verapaz and Peten departments. In El Salvador, southern Honduras, and northern parts of Nicaragua, rainfall totals were excessive, with a robust distribution of precipitation exceeding 100mm for many local areas neighboring the Gulf of Fonseca. Further south, enhanced easterly winds and an active ITCZ during the last week brought heavy amounts of precipitation across parts of the southern Caribbean and Pacific basin. These rains brought localized flooding as well as number of landslides for areas in Guatemala, Costa Rica, and Panama.

Precipitation forecasts suggest moderate to heavy rainfall to continue for some areas in Central America. The heaviest totals (>50 mm) are expected for parts eastern Nicaragua, and across Costa Rica and Panama, with more moderate totals for portions of Honduras, Guatemala, and El Salvador over the next seven days.



MFEWS is a USAID-funded activity whose purpose is to provide objective information about food security conditions. Its views are not necessarily reflective of those of USAID or the U.S. Government. The MFEWS weather hazards assessment process and products include participation by MFEWS field and home offices, NOAA-CPC, USGS, USDA, NASA, and a number of other national and regional organizations in the countries such as, INETER of Nicaragua, Meteorological Service of Honduras, IMN of Costa Rica, INSIVUMEH of Guatemala, ETESA of Panama, NMS of Belize and SNET of El Salvador. Questions or comments about this product may be directed to Wassila.Thiaw@noaa.gov or 1-301-763-8000 x7566. Questions about the USAID MFEWS activity may be directed to Gary Eilerts, USAID Program Manager for MFEWS, 1-202-219-0500 or geilerts@usaid.gov.