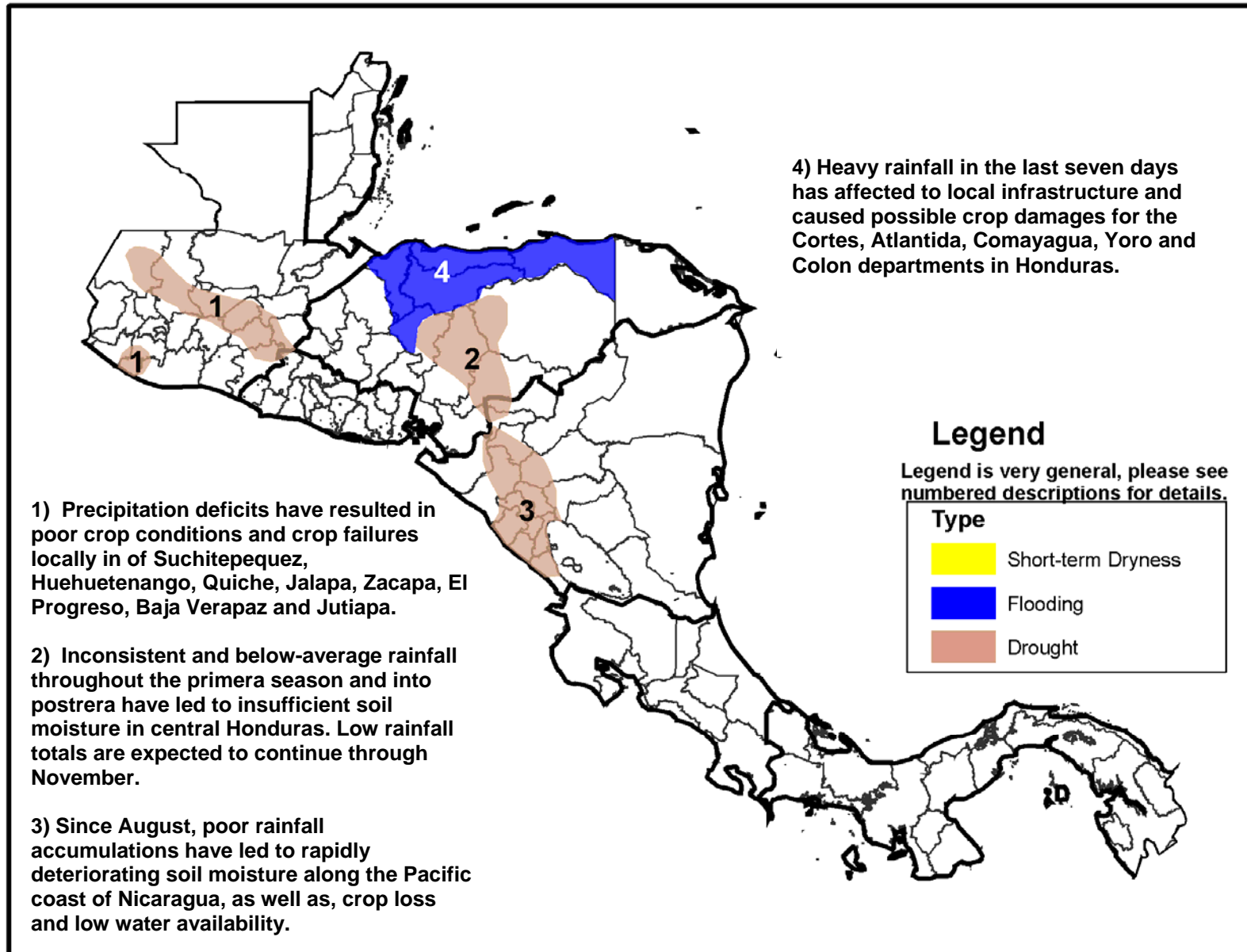


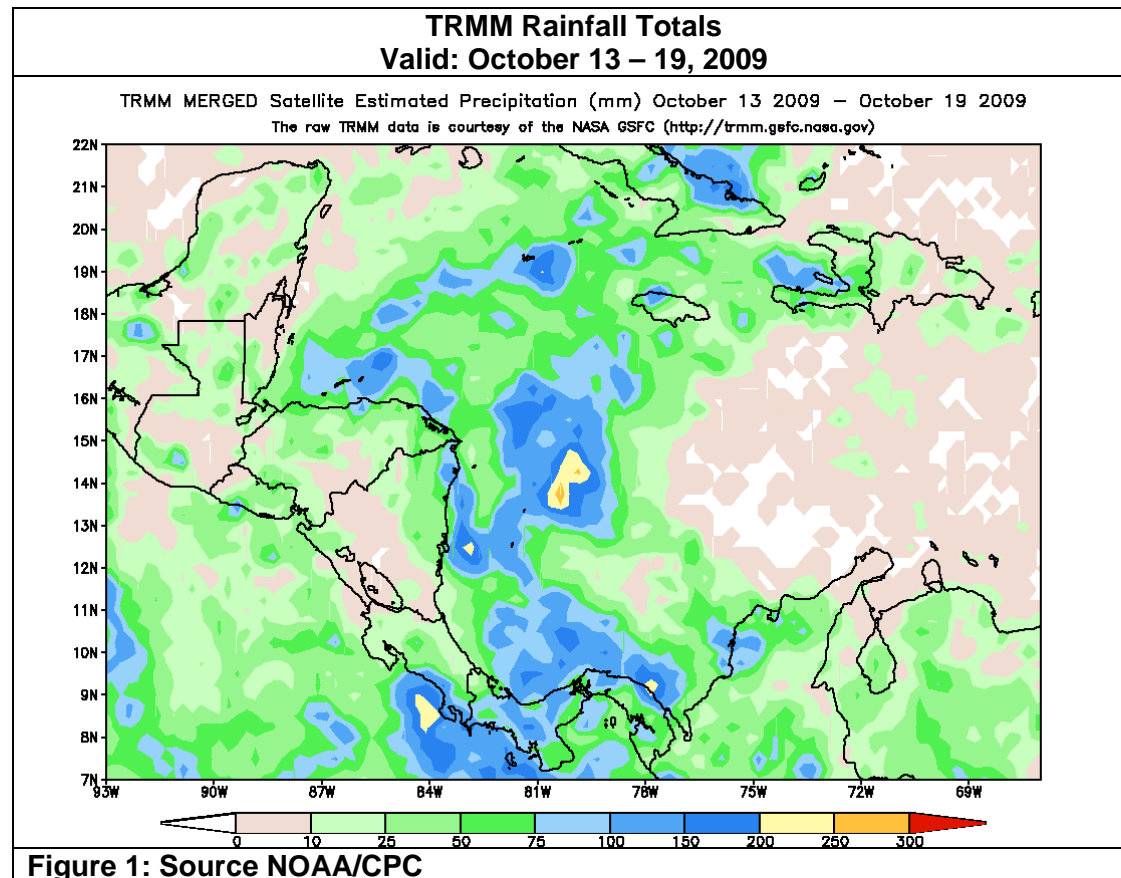
- Poor rainfall returns to Guatemala, Honduras and Nicaragua.
- Recently heavy rainfall caused crop and infrastructure damage in several departments in Honduras.



## Extended crop outlook below average in some areas

The decision made by the Ministry of Agriculture in Honduras to withhold seeds for the postrera season in some departments is somewhat supported by crop model products. According to the Water Requirement Satisfaction Index by USGS, if rainfall and external forces continue as they are at present, it is likely that a mediocre to a failed season will result in parts of central Guatemala, central and southern Honduras, and into western Nicaragua. These areas currently experience the lowest rainfall totals for the region this season with totals falling at less than 50% of normal. In addition, during the past three weeks an overall trend towards decreasing rainfall accumulation has occurred in the region (**See Figure**). However, heavy rainfall in northwestern Honduras in last week has affected road infrastructure, and may have caused damages to local crops.

Seven-day model outlook indicates moderate to rainfall totals for Guatemala, El Salvador, and western Honduras. The passage of a weak tropical wave in the southern Caribbean may also produce locally heavier precipitation amounts along the Atlantic side of Honduras and Nicaragua, as well as Costa Rica over the next seven days.



MFEWS is a USAID-funded activity whose purpose is to provide objective information about food security conditions. Its views are not necessarily reflective of those of USAID or the U.S. Government. The MFEWS weather hazards assessment process and products include participation by MFEWS field and home offices, NOAA-CPC, USGS, USDA, NASA, and a number of other national and regional organizations in the countries such as, INETER of Nicaragua, Meteorological Service of Honduras, IMN of Costa Rica, INSIVUMEH of Guatemala, ETESA of Panama, NMS of Belize and SNET of El Salvador. Questions or comments about this product may be directed to Wassila.Thiaw@noaa.gov or 1-301-763-8000 x7566. Questions about the USAID MFEWS activity may be directed to Gary Eilerts, USAID Program Manager for MFEWS, 1-202-219-0500 or geilerts@usaid.gov.