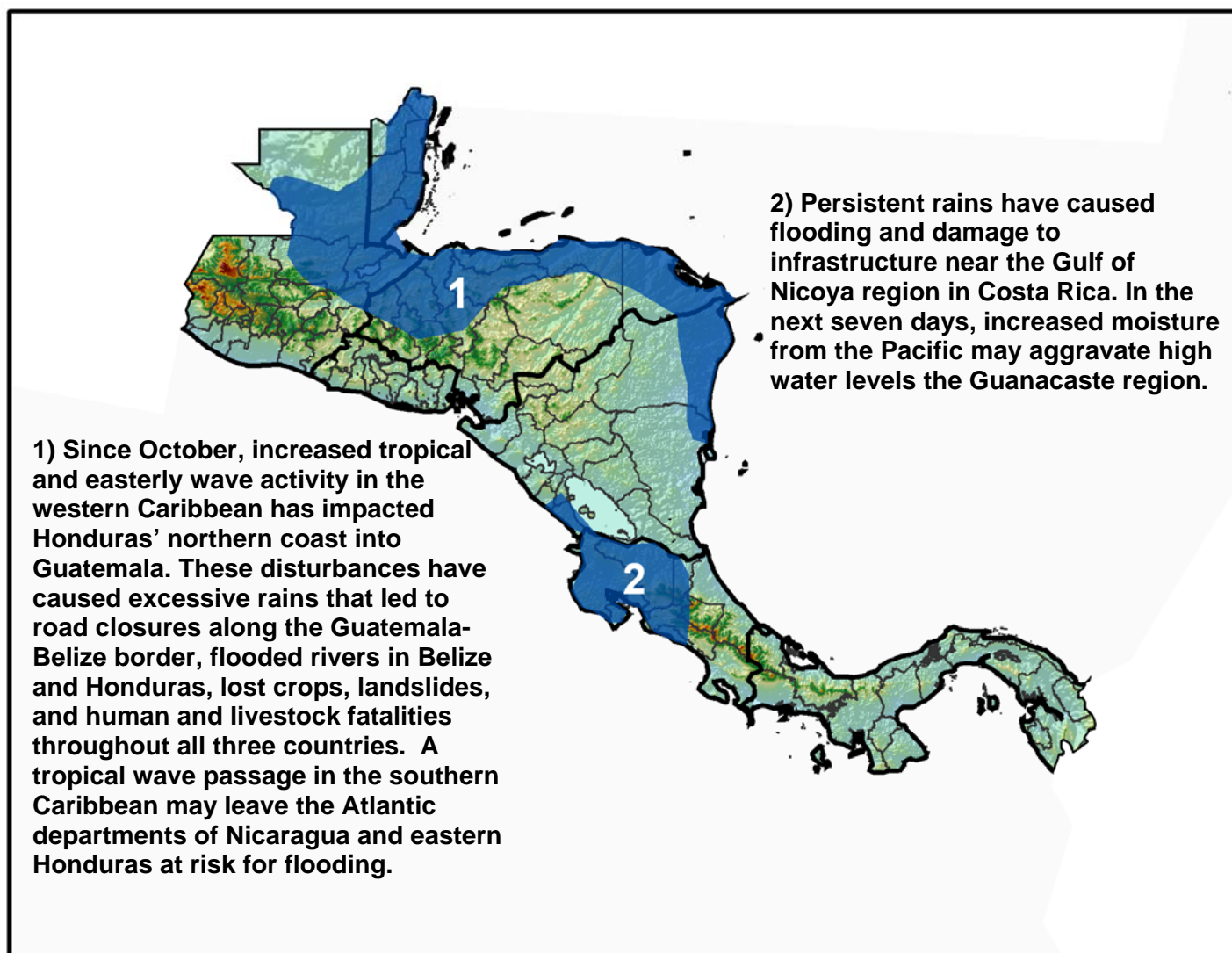


The MFEWS

Central America Weather Hazards and Benefits Assessment

For

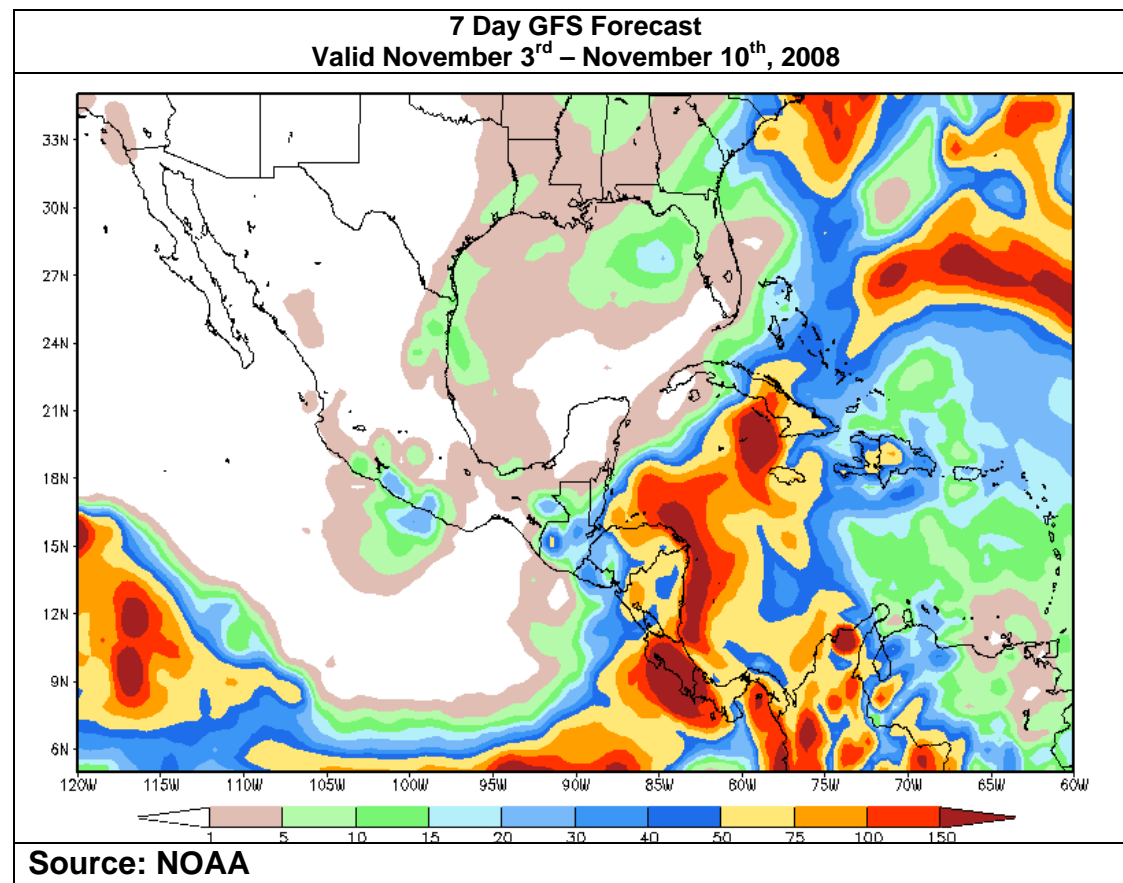
November 6 – November 12, 2008



Hazards Assessment Text Explanation:

During the last observation period, some relief to the heavy rains was felt throughout many parts of Central America. Modest amounts of rain, ranging between 10 -30 mm were observed in Guatemala, El Salvador, and in parts of Honduras and Nicaragua. Locally heavier totals (> 50 mm) were observed along the northern coastline of Honduras which may exacerbate flooding in local areas. Since October, the departments of Peten, Alta Verapaz, and Izabal in Guatemala have suffered greatly from lost crops, flooding, landslides, and infrastructural damage. In Honduras, flooding in along the Ulua, Chamelcon, Guayape, and Coyoil rivers have caused a high alert status in the departments of Olancho, Copan, Santa Barbara, Yora, and Choluteca. High river levels have led to evacuations, landslides, lost crops, and livestock in these departments. Government authorities in Guatemala, Honduras and Costa Rica continue to deploy emergency response efforts to assist flooding evacuees, and to provide water, sanitation and food for many of the affected areas.

For the November 5 – November 12 observation period, another easterly wave in the southern Caribbean is expected to produce enhanced rainfall along the Atlantic sides of Costa Rica, Nicaragua and Honduras. This wave has a moderate to high potential for development, as this system may strengthen into a tropical storm, bringing significant amounts of rain (> 75 mm) to the flood affected areas of Costa Rica, and coastal areas of Nicaragua and Honduras. In Guatemala, a decrease in rainfall and cooler temperatures are expected throughout the country.



The evaluation of climatological threats of MFEWS include the participation of the central and local offices of MFEWS, NOAA-CPC, USGS, NASA, INETER of Nicaragua, Meteorological Service of Honduras, IMN of Costa Rica, INSIVUMEH of Guatemala, ETESA of Panama, NMS of Belize and SNET of El Salvador. Any questions or comments on this product can be directed to Wassila.Thiaw@noaa.gov