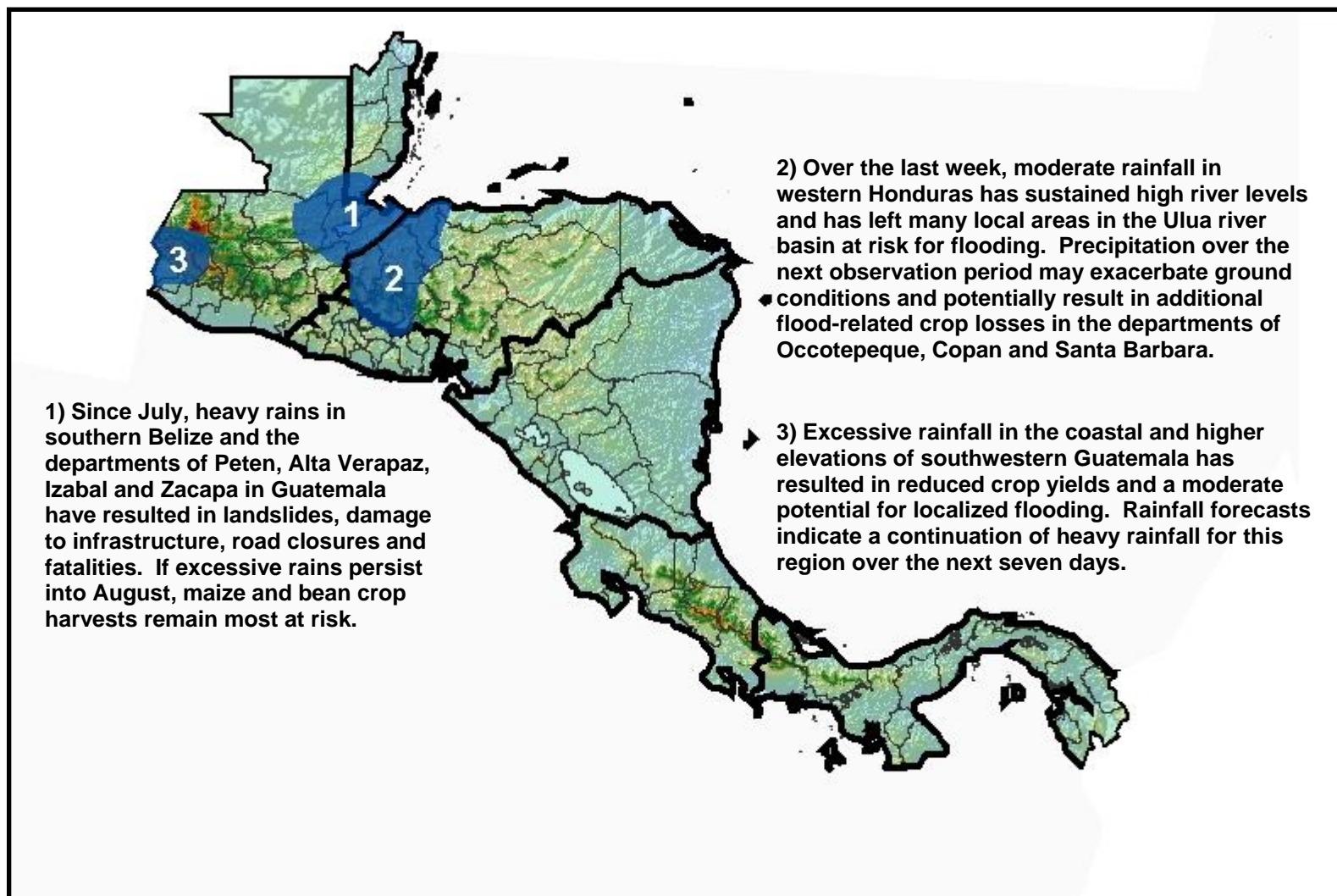


The MFEWS

Central America Weather Hazards and Benefits Assessment

For

August 7 – August 13, 2008

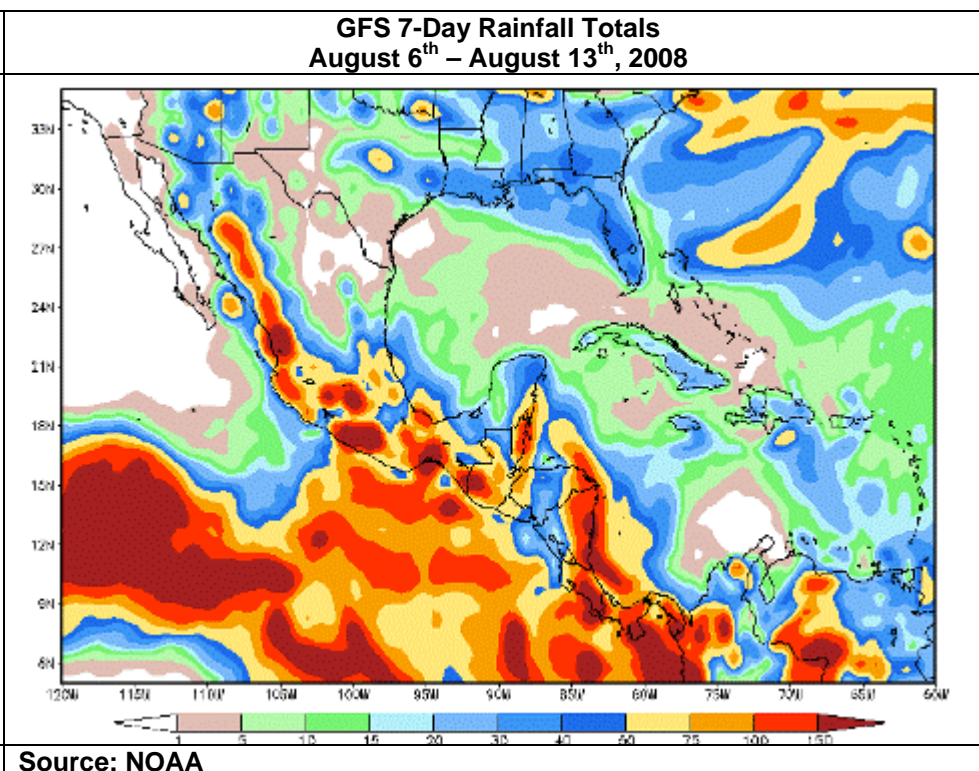
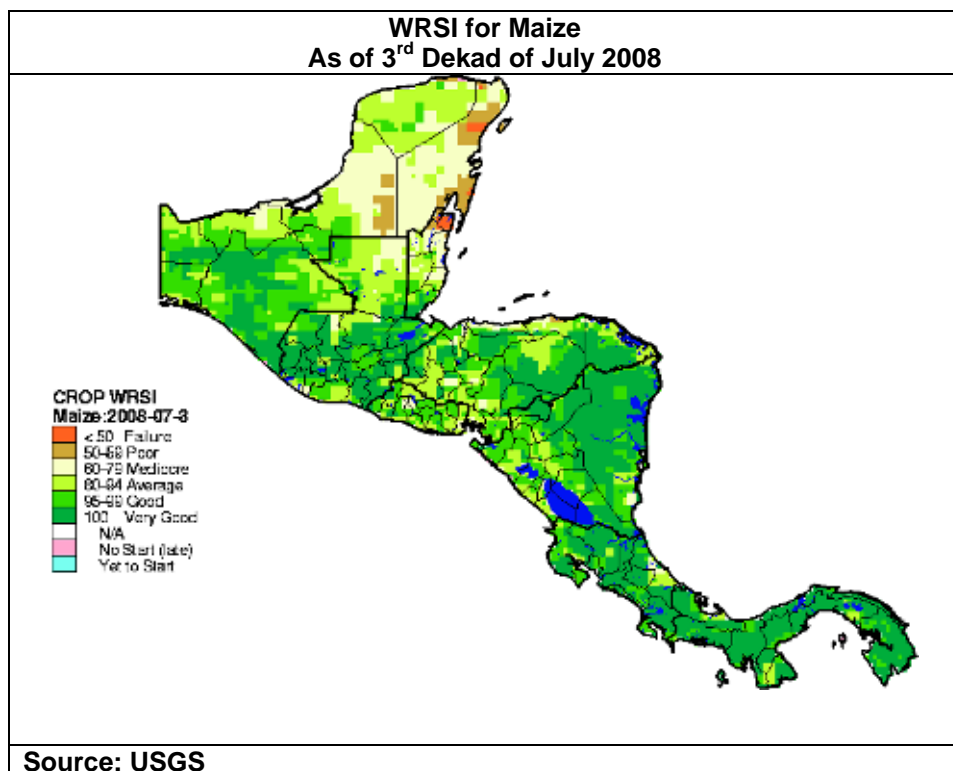


Hazards Assessment Text Explanation:

During the last observation period, widespread precipitation amounts (75 – 100 mm) were observed across many parts of northern and southern Guatemala, with heavy isolated totals in parts of northern El Salvador, and northwestern Nicaragua. Many parts of northern Guatemala are experiencing 150 to 200 percent above average rainfall for the Primera season and this continues to threaten maize and bean harvests in August. In addition, government authorities have declared states of emergency for 25 municipalities in the Alta Verapaz, Chiquimula, Guatemala, Huehuetenango, Izabal, Quiché, Zacapa and Petén departments. These municipalities have experienced infrastructure damages, landslides and fatalities due to excessive rainfall since July.

The above-average rainfall has also affected many local areas in western Honduras along the border. In the Ocotepeque, Copan and Santa Barbara departments of Honduras, there have been reports of flood-related crop losses. Moderate rainfall totals over the last week continues to saturate soils and sustain high water levels along the Chamelecon and Ulua rivers. Across the rest of the Central America domain, many parts of Nicaragua, Costa Rica and Panama have been receiving above-average rainfall, promoting the growth of maize and bean crops.

Precipitation forecasts over the next seven days indicate heavy, widespread rainfall totals for many areas that have experienced above-average rainfall since July. In Guatemala, rainfall amounts exceeding 50-75 mm may be expected to further saturate soils and reduce crop yields, as well as sustain the potential for landslides, flooding and other infrastructure damage.



The evaluation of climatological threats of MFEWS include the participation of the central and local offices of MFEWS, NOAA-CPC, USGS, NASA, INETER of Nicaragua, Meteorological Service of Honduras, IMN of Costa Rica, INSIVUMEH of Guatemala, ETESA of Panama, NMS of Belize and SNET of El Salvador. Any questions or comments on this product can be directed to Wassila.Thiaw@noaa.gov