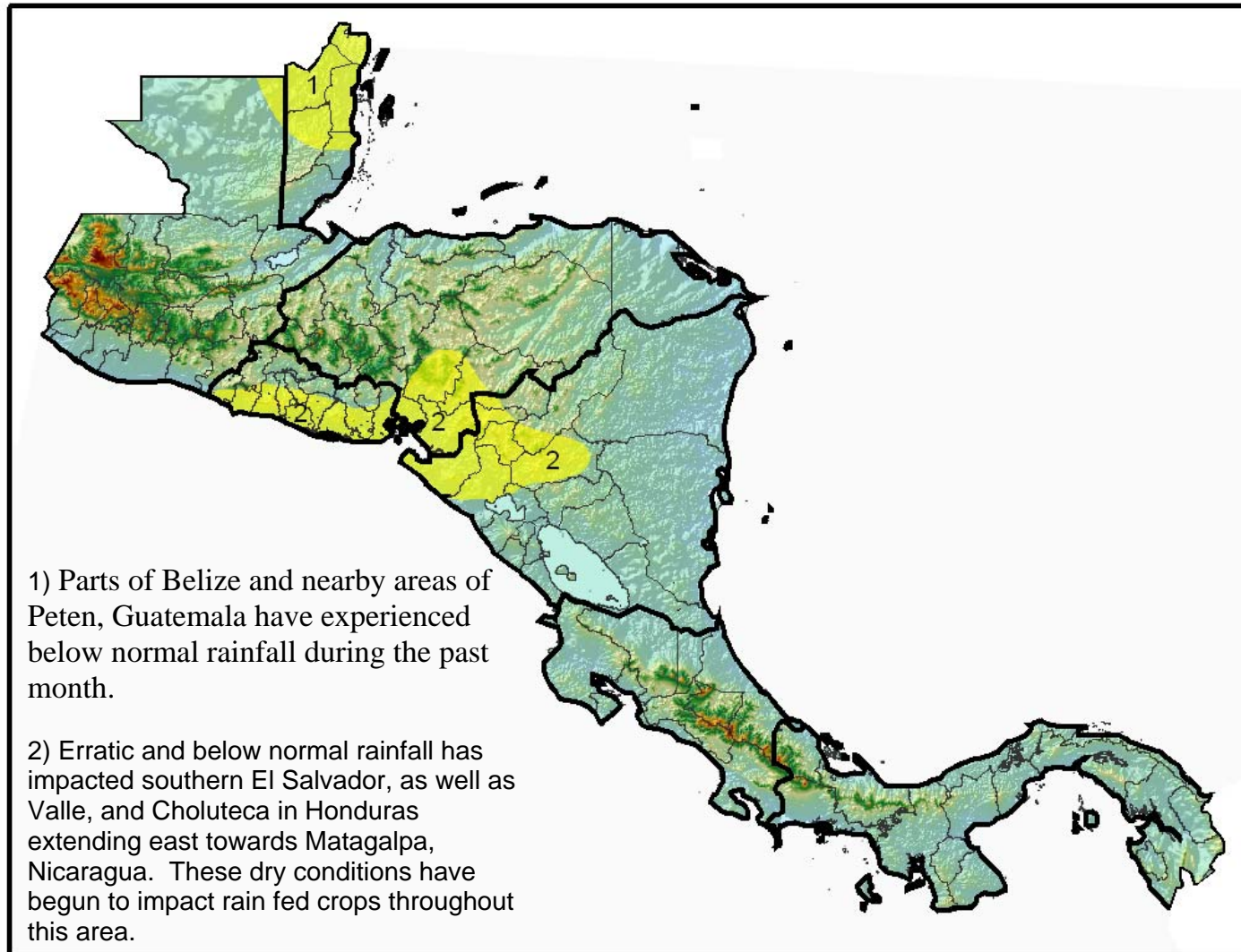


## The MFEWS

# Central America Weather Hazards and Benefits Assessment

For

July 26 – August 1, 2007

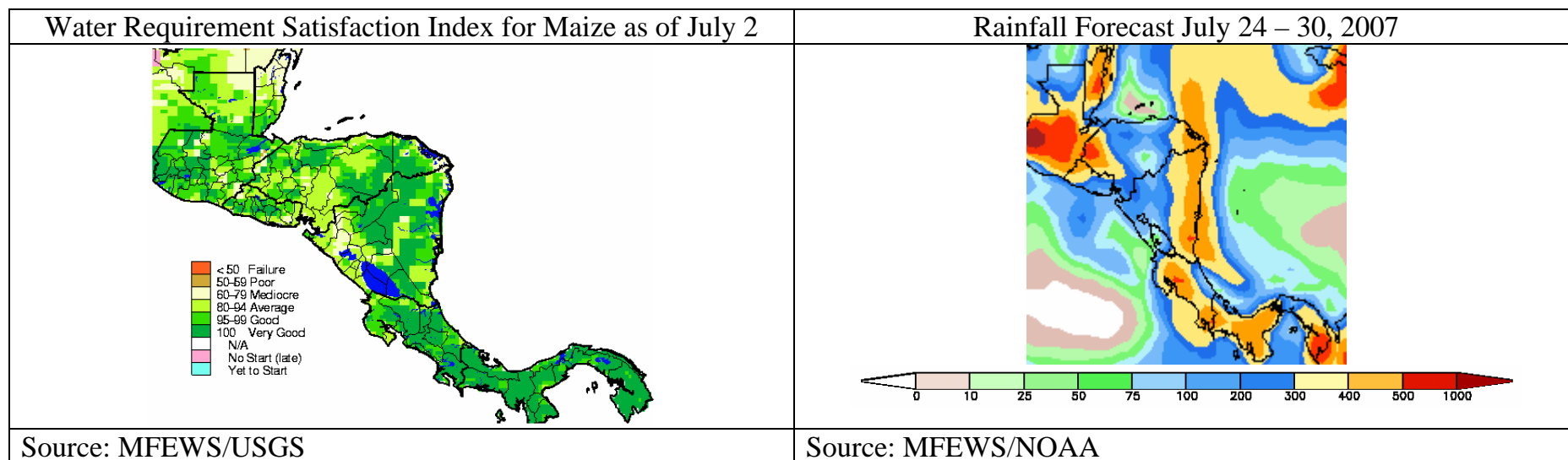


## Hazards Assessment Text Explanation:

Dry conditions have continued to spread across certain sections of Central America. The worst impacted area is in southern Honduras and Matagalpa in Nicaragua. The dry conditions are the result of erratic and below normal rains. Conditions are not universally poor. Some regions have experienced poor rainfall totals, but have not had extended breaks in the rains and other regions have experienced extended periods of dry conditions, and then received large totals that have sufficiently replenished soil water. We are now entering the Canicula period, the break in the rains along the Pacific side of Central America. In Honduras this period has thus far been wetter than normal, offering some relief.

Dry conditions have also been reported in southeastern Guatemala; however crops have remained largely unaffected as rainfall distribution has prevented deficits from becoming problematic.

During the past month rainfall totals over Belize, nearby portions of Guatemala and across much of the Yucatan peninsula have been below normal. These dry conditions are slow spreading south in Belize and there are growing concerns about the area in Guatemala near the Caribbean Sea.



The evaluation of climatological threats of MFEWS include the participation of the central and local offices of MFEWS, NOAA-CPC, USGS, NASA, INETER of Nicaragua, Meteorological Service of Honduras, IMN of Costa Rica, INSIVUMEH of Guatemala, ETESA of Panama, and SNET of El Salvador. Any questions or comments on this product can be directed to [Wassila.Thiaw@noaa.gov](mailto:Wassila.Thiaw@noaa.gov)