

The MFEWS

Central America Weather Hazards and Benefits Assessment

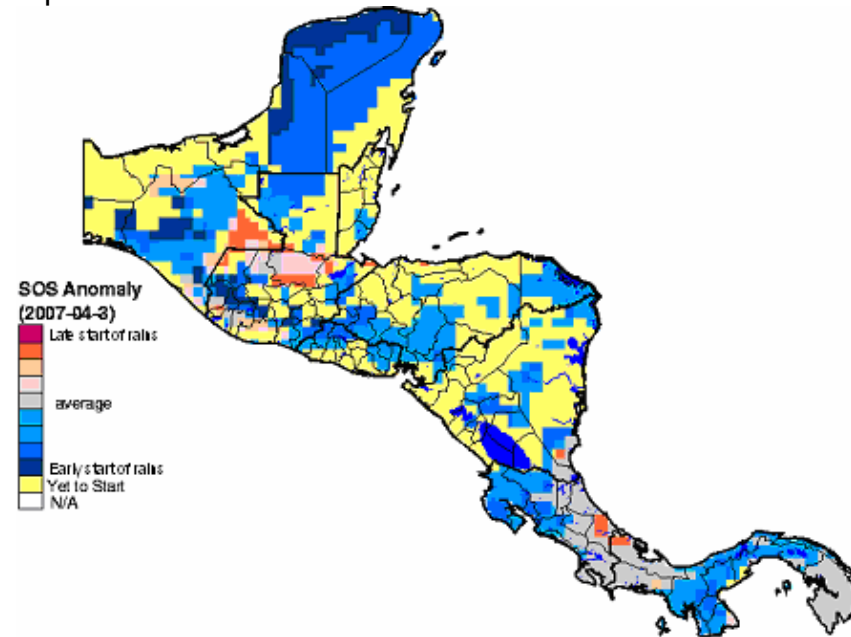
For

May 10 – May 16, 2007



Hazards Assessment Text Explanation:

The past week's rainfall was moderate in nature with heavier amounts falling in Costa Rica and Panama. Localized areas experienced pre-season rains, but most areas are progressing normally. Central Guatemala appears to be behind with the onset of its rainy season; however, soil conditions are good and there should be no impact on the sowing of primera season crops.



The above graphic depicts the difference from normal of the start of the rainy season based upon the IWMI 1961 - 1990 median rainfall dataset. Grey areas are indicative of rains that began within the same dekad as normal. Yellow areas are indicative of rains that have yet to start and normally have not yet started. Blue areas indicate an early start of the rainy season; and the pink and orange areas indicate a late start of the rainy season.

Graphic by USGS.

AUTHOR: Angel M. Bennett

The evaluation of climatologic threats of MFEWS include the participation of the central and local offices of FEWS NET, NOAA-CPC, USGS, NASA, INETER of Nicaragua, Meteorological Service of Honduras, IMN of Costa Rica and INSIVUMEH of Guatemala. Any questions or comments on this product, can be directed to Chet.Schmitt@noaa.gov