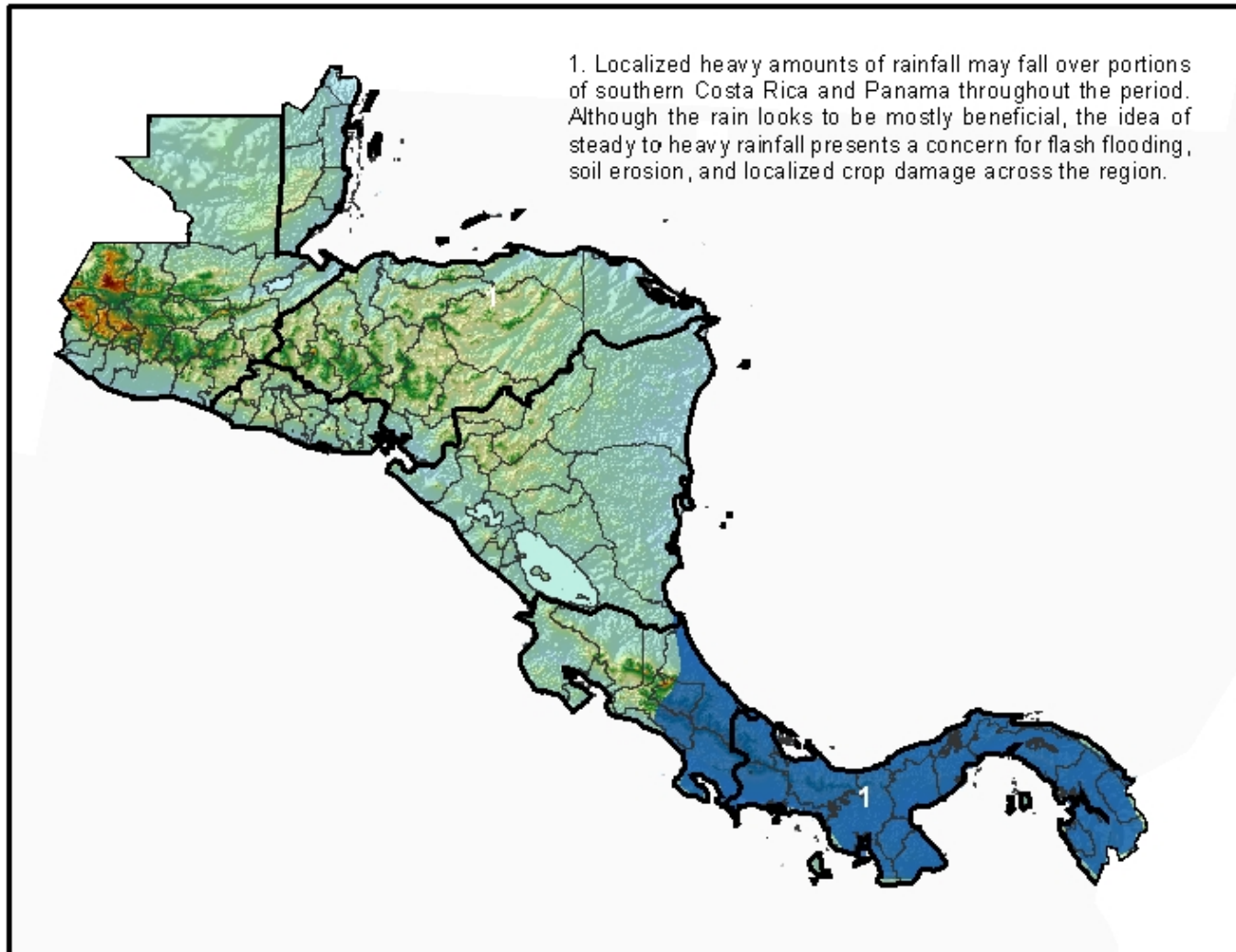


The MFEWS

Central America Weather Hazards and Benefits Assessment

For

May 4 – 10th, 2006



Hazards Assessment Text Explanation:

*Conditions across Central America continue to be along the lines of normal for early May with rains continuing in the Costa Rica/Panama region and more dry conditions as we head further to the north excluding southern Guatemala and El Salvador where some measurable rainfall has fallen this past week. These dry conditions should start to be replaced with more rainfall activity over the next few weeks as we continue through May. Current weather across the region has resulted in favorable conditions for land preparation for any Primera planting activities that have not taken place yet across the region.

The Primera season lasts from May through August and is known for its ample amount of rainfall the region receives. The amount of rain and its timing is critical for crop production throughout the entire region. Seasonal rains usually start mid way through May for most of Central America excluding Panama and Costa Rica which have already seen plentiful rainfall this past month.

During the upcoming period, seasonable conditions are expected to continue to favor agricultural activities within most of the region. Panama and Costa Rica will continue to see rainfall activity with some localized heavy amounts expected. This places a concern for flash flooding, possible soil erosion, and localized crop damage in this area.

AUTHOR: Kevin N. Berberich