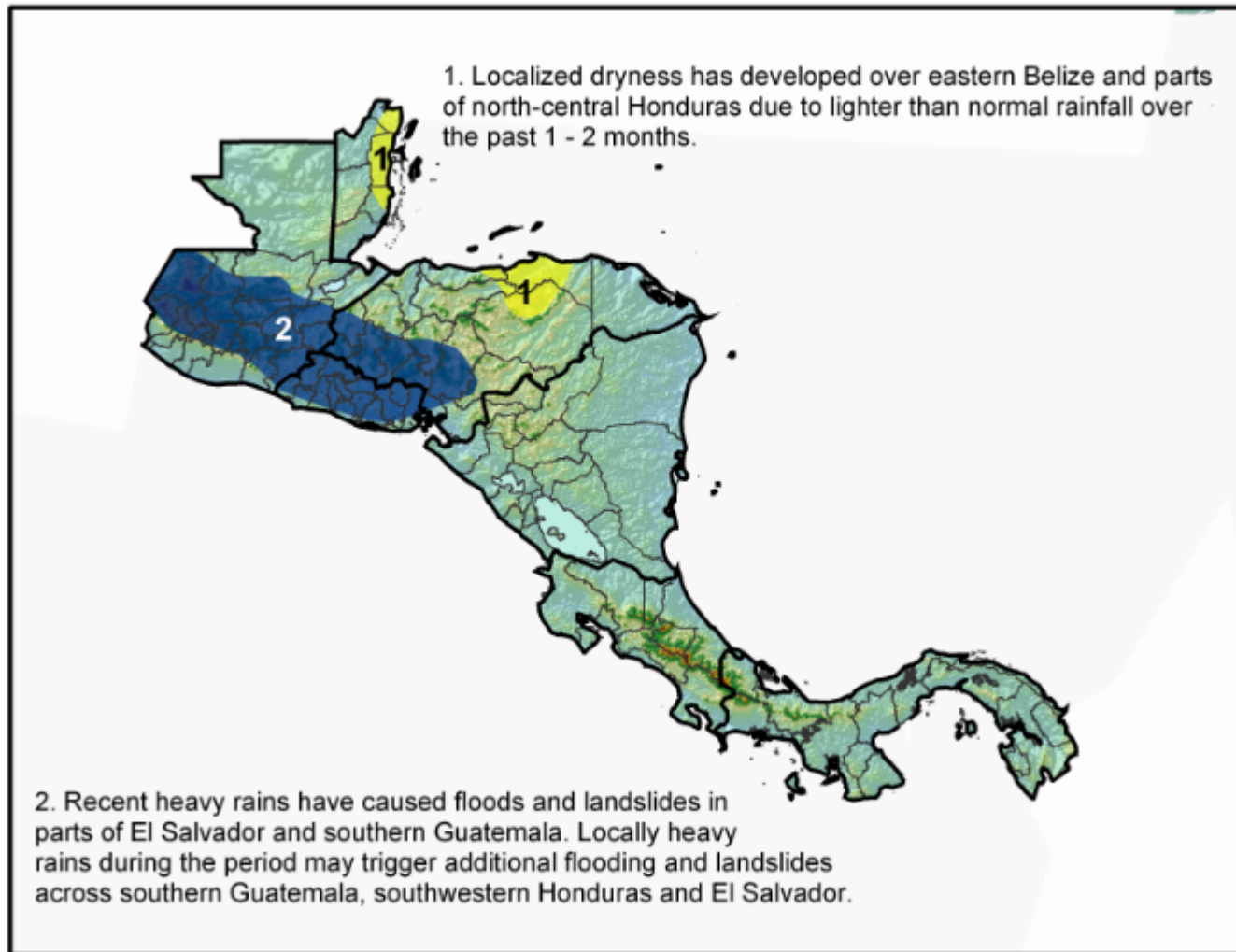


The MFEWS

Central America Weather Hazards Assessment

for

August 25 - 31, 2005



1) Rainfall has been spotty and lighter than normal during the past several weeks over eastern Belize and portions of north-central Honduras, including parts of Olancho and Colon. This has led to pockets of dryness which may have reduced crop yields in some areas and may be reducing moisture for some second season crops. However, the dryness is neither severe nor widespread. Scattered showers during the period may boost top soil moisture and benefit recently planted crops.

2) Locally heavy rain during the middle of the month of August has resulted in some flooding and landslides across some parts of southern Guatemala and El Salvador. Conditions will be favorable for continued rainfall across these areas, as well as southwestern Honduras, during the period. Some of these rains will be heavy, with weekly totals expected to range from 60 to as much as 200+ mm. As a result, the potential exists for flooding and landslides across southern Guatemala, El Salvador and southwestern Honduras. This includes the cities of Guatemala, San Salvador and Tegucigalpa. The greatest potential for flooding exists in the vicinity of rivers, in mountainous areas and in poorly drained urban areas.

AUTHOR: Chester V. Schmitt