

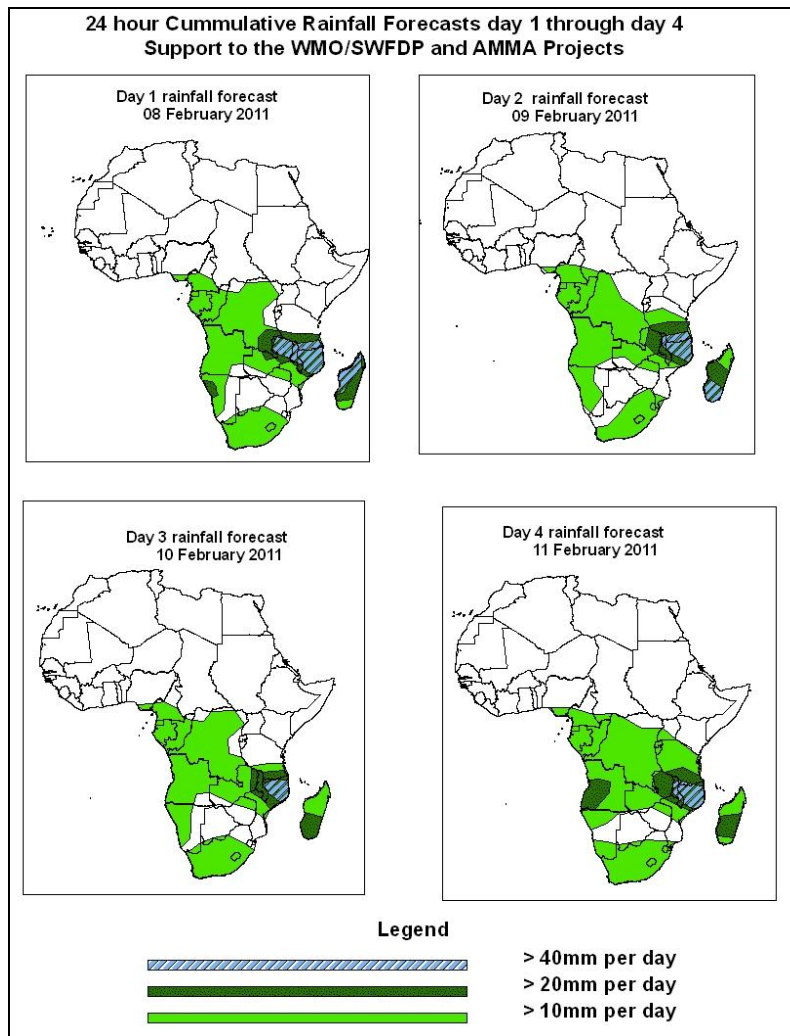


NCEP Contributions to the WMO Severe Weather Forecasting Demonstration Project (SWFDP) and to the African Monsoon Multidisciplinary Analysis (AMMA) Initiative

1.0. Rainfall Forecast: Valid, 06Z of 08 February – 06Z of 11 February 2011, (Issued at 12:00Z of 07 February 2011)

1.1. Twenty Four Hour Cumulative Rainfall Forecasts

The forecasts are expressed in terms of probability of precipitation (POP) exceeded based on the NCEP, UK Met Office and the ECMWF NWP outputs, the NCEP global ensemble forecasts system (GEFS) and expert assessment.



Summary

In the coming four days, moderate to heavy rainfall is expected to continue over Southern Tanzania, Eastern Zambia, Malawi and Mozambique due to the persistent lower level convergence in the region and cyclonic circulation in the vicinity of Mozambique Channel. Hence, there is an increased chance for rainfall to exceed 20mm per day over Madagascar, Zambia, Angola, Namibia, Malawi, southeastern DRC, Western and southern Tanzania.

1.2. Models Comparison and Discussion-Valid from 00Z of 08 February 2011

From the GFS, ECMWF and UKMET models, a series of cut off lows over the southern parts of the Gulf of Guinea, parts of central African region and southern Sudan should form an east-west oriented trough. In the coming four days, this trough is expected to persist, maintaining a central value of between 1002hpa and 1003hpa in its eastern end (mainly over Central African Republic / Sudan region) and a central value of between 1007 and 1008hpa along its western end. The lows associated with the meridional arm of the ITCZ are more or less absent except for a low pressure center over Lake Victoria environs, which weakens by 48hours, deepens by 72hours and persists by 96hours period. A low pressure system in the vicinity of Mozambique Channel and Madagascar is expected to maintain its position and persist throughout the period in consideration and shift westwards by 96hour period. In general, there appears to be some level of disparity in pressure patterns as depicted by the GFS, ECMWF and UKMO models.

According to the GFS, ECMWF and UKMET models, St. Helena High pressure system is expected to weaken progressively from about 1024hpa by 24hours to about 1018hpa by 96hours period. Similarly, the Mascarene high pressure system over southwest Indian Ocean appears very weak. Its central value is not visible from 24 to 72 hour period, but appears as 1020hpa by 96 hour period.

At 850hPa level, the GFS model indicates east-west oriented convergence line in the region between the coastal areas of the Gulf of Guinea and northeast DRC. The convergence line is expected to be more pronounced over the eastern parts of the Gulf of Guinea within 24 hours, it deepens and extends westward by 48 hours, it persists and covers the entire stretch of the Gulf of Guinea by 72 to 96 hour period. The usual north-south oriented convergence line is replaced by a cyclonic circulation which persists throughout the 4 day period. Another convergence line is expected in the region extending from western Angola to western Namibia, while localized cyclonic is expected to extend into South Africa. The cyclonic circulation near Madagascar is also expected to weaken slightly and then deepen, shifting westwards by 96 hours.

At 700hPa level, mostly northeasterly to easterly winds dominate across western and central African countries. A weak lower tropospheric convergence is expected to dominate the flow over Angola, DRC, Malawi, Tanzania, Mozambique and Zambia, through 24 to 96 hours. The cyclonic circulation in the Mozambique Channel is

expected to persist through 24 to 48 hours and fill up by 72 hours; appearing as a weak trough by 96 hours period.

At 200hPa, a zone of strong wind (>150Kts) associated with the Sub Tropical westerly Jet in the sub-tropical region of northern Africa is expected to attain a slightly wavy pattern through 24 to 96 hours. Similarly, strong winds (>90Kts) associated with the Sub-Tropical Westerly Jet in the Sub Tropical region of southern Africa is expected to be wavy for 24 to 72 hours period and appear as pockets by 96 hours period..

In the coming four days, moderate to heavy rainfall is expected to continue over Southern Tanzania, Eastern Zambia, Malawi and Mozambique due to the persistent lower level convergence in the region and cyclonic circulation in the vicinity of Mozambique Channel. Hence, there is an increased chance for rainfall to exceed 20mm per day over Madagascar, Zambia, Angola, Namibia, Malawi, southeastern DRC, Western and southern Tanzania.

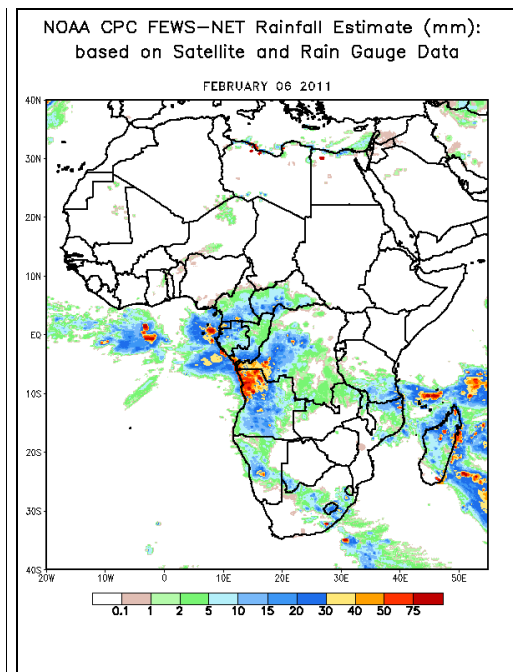
2.0. Previous and Current Day Weather Discussion over Africa (06 – 07 February 2011)

2.1. Weather assessment for the previous day (06 February 2011):

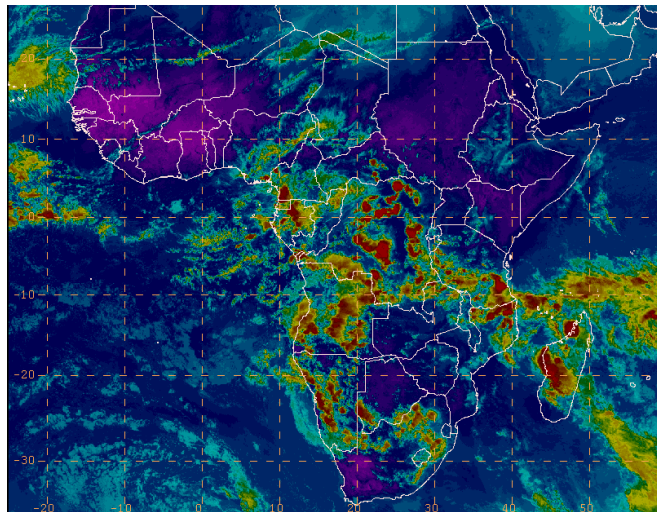
During the previous day, a combination of light, moderate and heavy rainfall was observed over Cameroun, CAR, Eq. Guinea, Congo, DRC, Gabon, Angola, Namibia, Tanzania, Mozambique, Madagascar and parts of South Africa.

2.2. Weather assessment for the current day (07 February 2011):

Intense clouds are observed over Madagascar, Tanzania, Namibia, Angola, DRC, northern Mozambique, Gabon, Eq. Guinea, Botswana, Cameroun, southeastern Nigeria and South Africa.



IR Satellite Image, Valid 1622Z, February 7, 2011



*Previous day rainfall condition over Africa (Left)
based on the NCEP CPCE/RFE and current day
cloud cover (top) based on IR Satellite image*

Author(s): Onyilo Desmond Onyilo (Nigerian Meteorological Agency) / CPC-African Desk), Desmond.Onyilo@noaa.gov

Disclaimer: This bulletin is for training purposes only and should be used as guidance. NOAA does not make forecasts for areas outside of the United States.