



Forecast guidance for Severe Weather Forecasting Demonstration Project (SWFDP)

SHORT RANGE FORECAST DISCUSSION 14H00 EST 26th December, 2006

**AFRICA DESK
CLIMATE PREDICTION CENTER
National Centers for Environmental predictions
National Weather Service
NOAA
Camp Springs MD 20746**

Valid 12:00Z 27th December 2006 - 00z 29th December 2006

TROPICAL CYCLONE (TC) 05S (BONDO), LOCATED APPROXIMATELY 17.9S 45.8E. NORTH-NORTHWEST OF ANTANANARIVO, MADAGASCAR, HAS TRACKED SOUTHWARD AT 11 KNOTS OVER THE PAST SIX HOURS. TC 05S BONDO HAS WEAKENED RAPIDLY OVER LAND DUE TO THE TERRAIN OF MADAGASCAR. TC BONDO IS FORECAST TO TRACK OVER LAND AND CONTINUE TO WEAKEN. THE DYNAMIC AIDS ARE IN GOOD AGREEMENT WITH THIS SCENARIO, ALTHOUGH EGRR DEPICTS AN ALTERNATE SCENARIO IN WHICH THE REMNANT LOW TRACKS OVER THE EASTERN MOZAMBIQUE CHANNEL. SHOULD THIS OCCUR RE-GENERATION IS POSSIBLE. THIS FORECAST IS BASED ON A CONSENSUS OF THE AVAILABLE DYNAMIC AIDS. THIS IS THE FINAL WARNING ON THIS SYSTEM BY THE JOINT TYPHOON WARNING CENTER (NAVPACMETOCEN) .

The general pattern at 200hpa over the Southern Africa (South of the Equator) shows a strong anticyclone or high pressure system centered at about 21S 22E which will cause zonal flow and the flow north 20S is easterly to southeasterly 20 to 45kt and in areas south of 22S westerly to northwesterly winds of 25 to 95kt are prevailing . A trough extending north-west of the point 30S 10W is approaching from the far west. At T+ 48 Hrs the cut off high shifts slightly northwards as a weak trough moves over Southern Africa. At T+72 Hrs the trough moves through over the central parts of Southern Africa causing north-westerly winds of about 25 to 55kt but no indication of a jet-stream moving through. The UK- Met and ECMWF models are similar to GFS in terms of positioning of the system at this level.

At 500hpa a trough is moving through over the western part of South Africa causing northwesterly 25 to 45kts winds over much of the southern parts. A weak low can be observed over the northern part of Mozambique and another one sitting along the coast of Angola causing a continuation of the tropical storms normal for this time of the year for these areas. A high pressure system approaching from the west pushes the trough southwards hence the trough affects mainly the southeastern part of South Africa. At T+72 the flow will be mainly westerly to northwest 25 to 50kt in the south with a weak

trough moving over southern Botswana. The low which was sitting over northern Mozambique is expected to migrate northwards to southern Tanzania whilst the one which was along the Angolan coast also migrate northwards towards the Equator. The UK- Met and ECMWF models handle the situation similar and no major discrepancies between these models and GFS.

At 850hpa the tropical cyclone BONDO (the exact position and track is attached above as supplied by JTWC). A trough is sitting over the western interior of S.A. and extends northwards to the southern part of Angola. Two high pressure cells can be observed, one to the west of the trough (St.Helena/Atlantic High) and one in the east (Mascarine/Indian Ocean High). A deepening low pressure system is located at about 8S 58E is still a developing system and it will be well worth to observe how turns out with the models giving winds of up to 30kts. At T+48 the low over NE of Madagascar moves w/sw and will be at about 9S 66E and at this stage could be classified as a tropical disturbance. At T+72 this system continues tracking southwestwards and will cause enhanced precipitation chances over northeastern Madagascar.

There is a resemblance of UK- Met, ECMWF and GFS models in indicating the low developing NE of Madagascar but ECMWF suggesting winds of up to 40kt with the system at T+72. At this stage we'll have to wait for the bulletin from one of our specialized centers to see what happens to this system.

Note: All maps or pictures are attached below including forecast maps for the next three days.

Authors:-Siyabonga Francis Mthethwa (South African Weather Service and Africa Desk)

Francis Kiba Gumbo (Tanzania Meteorological Services and Africa Desk
Wassila Thiaw, Africa Desk

SUMMARY TABLES FOR RISK AREAS

DAY 1: Wednesday 27th December 2006

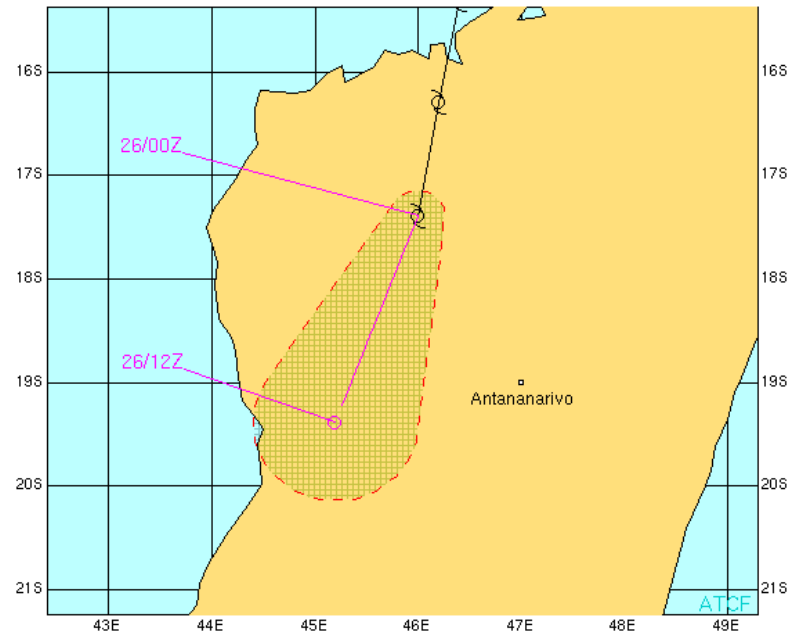
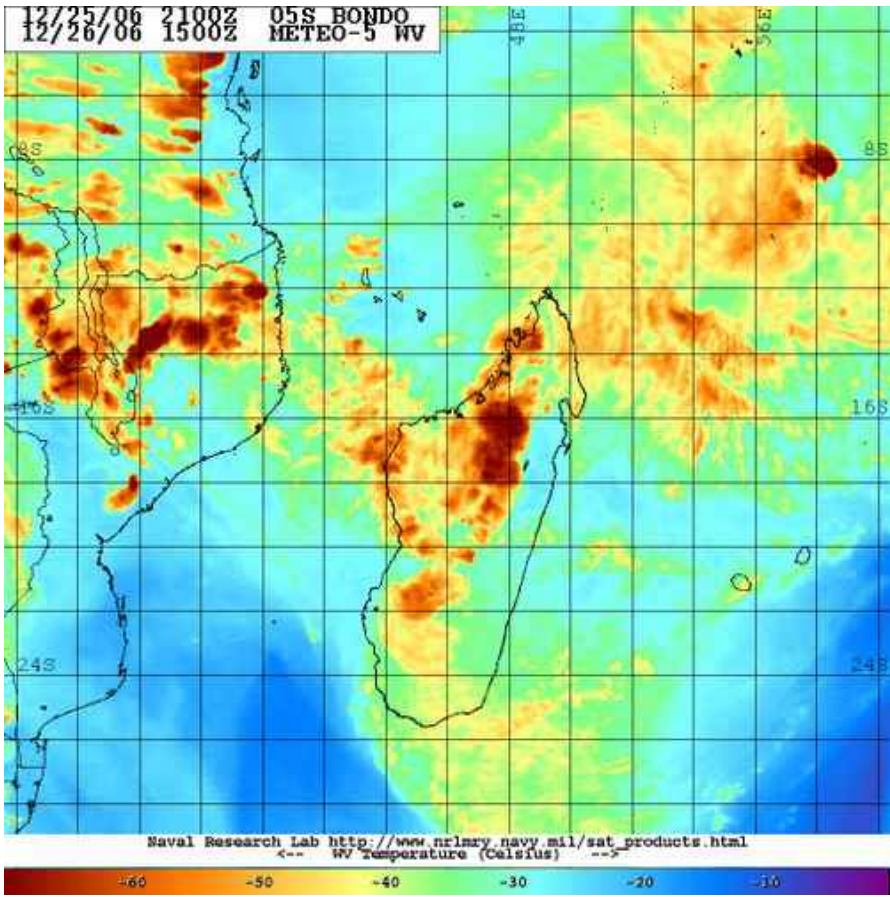
RISK	HEAVY PRECIPITATION				STRONG WINDS			
	No risk	Low risk	Medium risk	High risk	No risk	Low risk	Medium risk	High risk
Botswana				In the NW	X			
Madagascar				Extr NE				Extr NE
Mozambique				NE part	X			
Tanzania				S parts	X			
Zimbabwe	X				X			

DAY 2: Thursday 28th December 2006

	HEAVY PRECIPITATION				STRONG WINDS			
RISK	No risk	Low risk	Medium risk	High risk	No risk	Low risk	Medium risk	High risk
Botswana			In the NW		X			
Madagascar	X							
Mozambique	X				X			
Tanzania	X				X			
Zimbabwe	X				X			

DAY 3: Friday 29th December 2006

	HEAVY PRECIPITATION				STRONG WINDS			
RISK	No risk	Low risk	Medium risk	High risk	No risk	Low risk	Medium risk	High risk
Botswana	X				X			
Madagascar				In the NE				Extr NE
Mozambique	X				X			
Tanzania			In the NE		X			
Zimbabwe	X				X			



TROPICAL CYCLONE 05S (BONDO) WARNING #17
 *** FINAL WARNING ***
 260000Z POSIT: NEAR 17 4S 46.0E
 MOVING 190 DEGREES TRUE AT 11 KNOTS
 26/00Z, WINDS 035 KTS, GUSTS TO 045 KTS
 26/12Z, WINDS 020 KTS, GUSTS TO 030 KTS

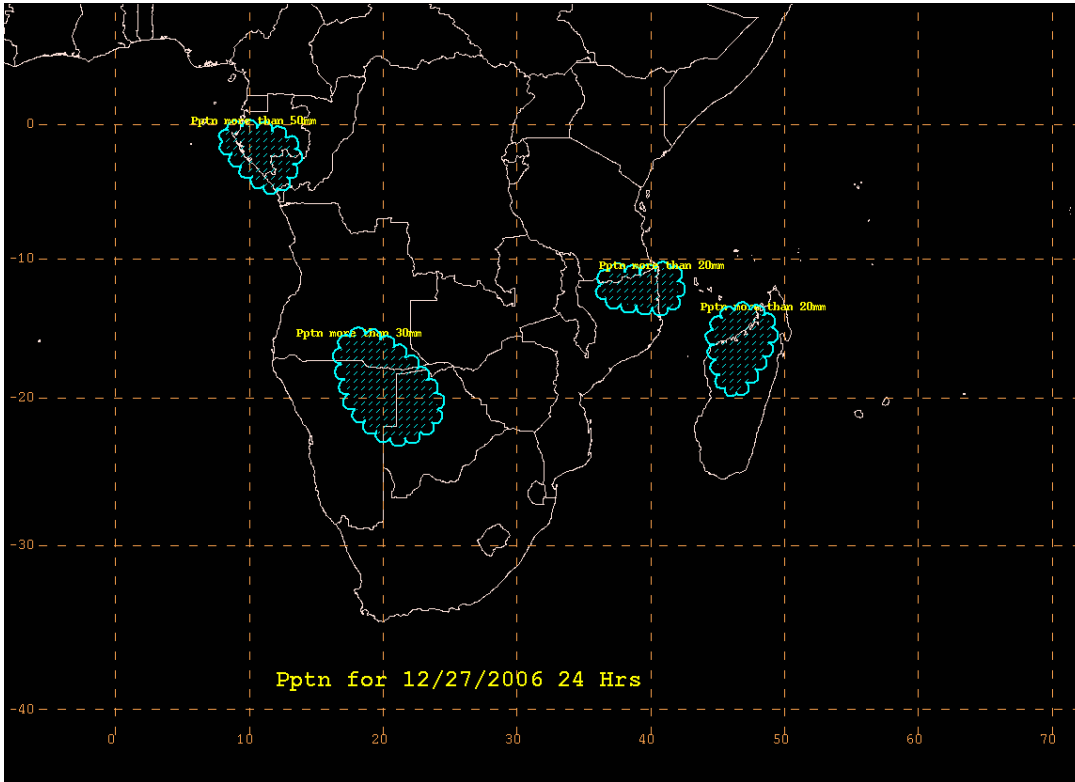
CPR TO:	NM	DTG
EUROPA_ISLAND	326	26/12Z

BEARING AND DISTANCE	DIR	DIST	TRU
EUROPA_ISLAND	60	327	12

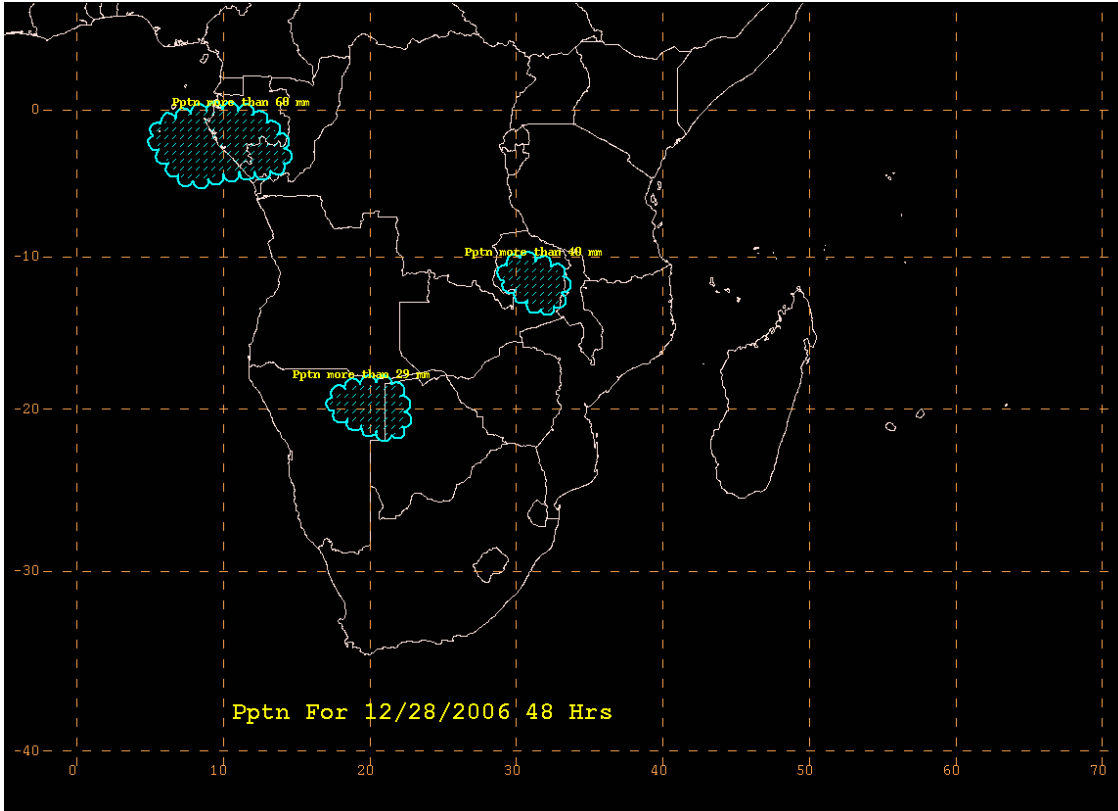
○ TROPICAL DEPRESSION
 ○ TROPICAL STORM
 ● TYPHOON
 PAST 6 HOURLY CYCLONE POSITS IN BLACK
 FORECAST CYCLONE POSITS IN COLOR



FORECAST MAP FOR DAY1



FORECAST FOR DAY2



FORECAST FOR DAY 3

