

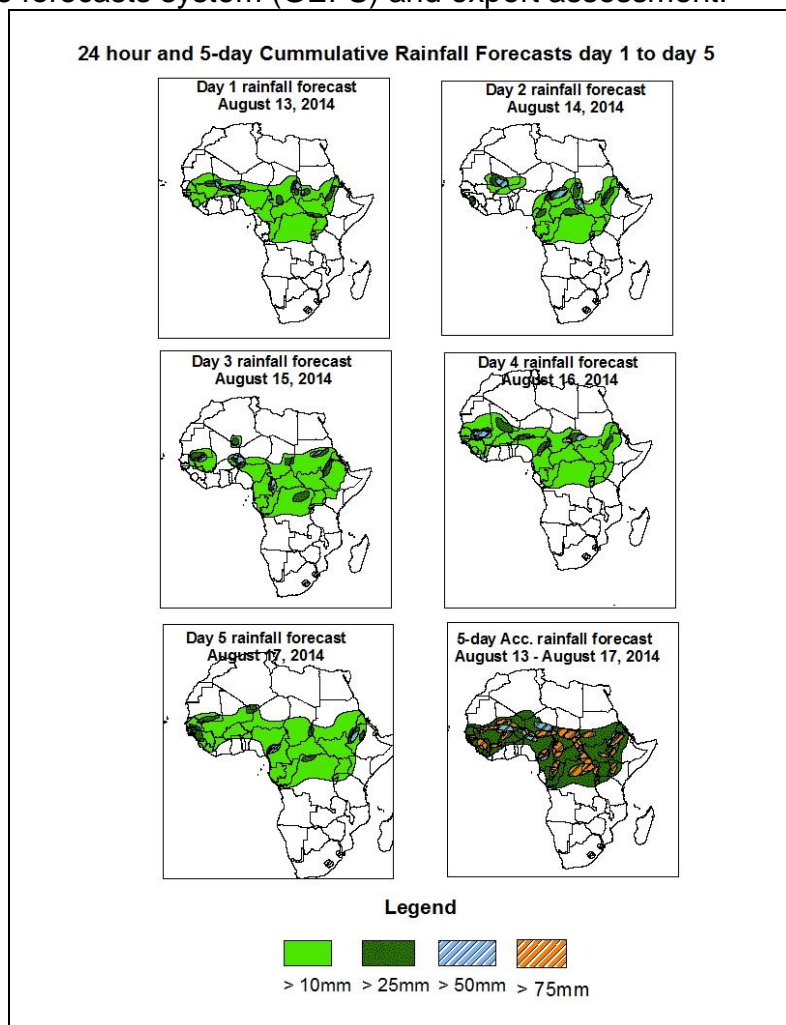


NCEP Contributions to the WMO Severe Weather Forecasting Demonstration Project (SWFDP) and to the African Monsoon Multidisciplinary Analysis (AMMA) Initiative

1. Rainfall Forecast: Valid 06Z of August 13 – 06Z of August 17, 2014. (Issued at 1800Z of August 12, 2014)

1.1. Twenty Four Hour Cumulative Rainfall Forecasts

The forecasts are expressed in terms of 75% probability of precipitation (POP) exceeded, based on the NCEP/GFS and UK Met Office NWP outputs, and the NCEP global ensemble forecasts system (GEFS) and expert assessment.

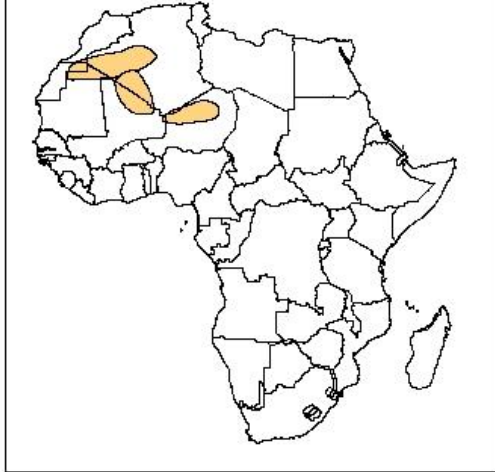


Summary

In the next five days, the monsoon flow from the Atlantic Ocean with its associated convergence across the Sahel region, localized wind convergences over Ethiopia, DRC, Uganda, and the neighboring areas, and westward propagating cyclonic circulation across West Africa are expected to enhance rainfall in their respective regions. Thus, there is an increased chance for moderate to heavy rainfall over Guinea-Conakry, Sierra Leone, Liberia, portions of Mali, northern Cote d'Ivoire, northern Ghana, northern Togo, northern Benin, Burkina Faso, Niger, northern Nigeria, CAR, Chad and Sudan, northern DRC, portions of Uganda, Eritrea, western Kenya and Ethiopia.

Atmospheric Dust Forecasts, day 1 to day 3,
Moderate Dust Concentration (MDC) and High Dust Concentration (HDC)

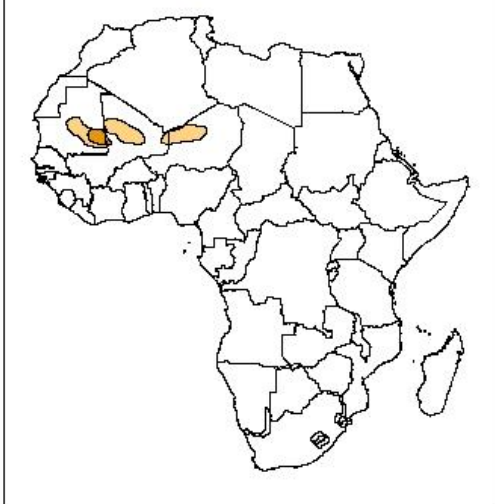
Day 1 Dust forecast
August 13, 2014



Day 2 Dust forecast
August 14, 2014



Day 3 Dust forecast
August 15, 2014



Highlights

**There is an increased chance
for moderate to high dust
concentration over Western
Sahara, Mauritania, Algeria
and Mali.**

Legend



MDC, Vis. < 5km



HDC, Vis. < 1km

1.2. Model Discussion: Valid from 00Z of August 12, 2014

The Azores high pressure system over the Northeast Atlantic Ocean is expected to maintain its central pressure value of about 1028hpa from 24 to 48hours, and then it is expected to weaken, with its central pressure decreasing from about 1028hpa in 48hours to 1023hpa in 120 hours, according to the GFS model.

The St Helena high pressure system over the Southeast Atlantic Ocean is expected to weaken slightly from 24 hours to 48 hours with its central pressure value of about 1029hpa in 24 hours to 1028hpa in 48 hours, and then it is expected to intensify with its central pressure value increasing from about 1028hpa in 48hours to 1035hpa in 120 hours, according to the GFS model.

The central pressure values associated with the Mascarene high pressure system over the southwestern Indian Ocean is expected to increase from about 1024hpa in 24 hours to 1037hpa in 96 hours, and then it is expected to weaken from 96 to 120 hours with its central pressure value about 1037hpa in 96 hours to 1034hpa in 120 hours, according to the GFS model.

The central pressure value associated with the heat low in the region between western and central Sahel is expected to vary in the range between 1004hpa to about 1007hpa during the forecast period. The heat low over Sudan is also expected to vary in the range between 1004hpa to 1007hpa from 24 to 96 hours and then it is expected to fill up from 96 to 120 hours with its central pressure decreasing to about 1003hpa in 120 hours. The heat low across DRC is expected to vary in the range between 1010hpa to about 1011hpa during the forecast period, according to the GFS model.

At 925Hpa level, a zonal wind convergence is expected to prevail in the region between Mauritania and Sudan through 24 to 120 hours. Dry northeasterly winds are expected to prevail over parts of Mauritania, Libya Egypt and northern Sudan. Local wind convergences are also expected over DRC, Tanzania, Uganda, Kenia, Burundi and Ethiopia during the forecast period.

At 850Hpa level, seasonal wind convergences are expected to remain active in the region between western Sahel and Sudan through 24 to 120 hours. Local wind convergences are also expected to remain active over DRC, Uganda, Burundi, Rwanda Tanzania, Eritrea, and Ethiopia during the forecast period.

At 700hpa level, a cyclonic circulation and its associated trough is expected to propagate westwards between chad and Mauritania across West Africa through 24 to 120 hours.

At 500Hpa level, a zone of moderate wind (>30kts), associated with African easterly jet is expected to prevail over West Africa, chad and Sudan, with its core propagating between Niger and southern Mauritania.

At 150hpa level, moderate wind (>30kts) is expected to prevail over northern part of western and central Sahel through 24hours to 120 hours, whereas strong wind (>50kts) associated with the Tropical Easterly Jet (TEJ) is expected to prevail over southern parts of West Africa, central and eastern Africa, through 24 hours to 120 hours.

In the next five days, the monsoon flow from the Atlantic Ocean with its associated convergence across the Sahel region, localized wind convergences over Ethiopia, DRC, Uganda, and the neighboring areas, and westward propagating cyclonic circulation across West Africa are expected to enhance rainfall in their respective regions. Thus, there is an increased chance for moderate to heavy rainfall over Guinea-Conakry, Sierra Leone, Liberia, portions of Mali, northern Cote d'Ivoire, northern Ghana, northern Togo, northern Benin, Burkina Faso, Niger, northern Nigeria, CAR, Chad and Sudan, northern DRC, portions of Uganda, Eritrea, western Kenya and Ethiopia.

2.0. Previous and Current Day Weather Discussion over Africa

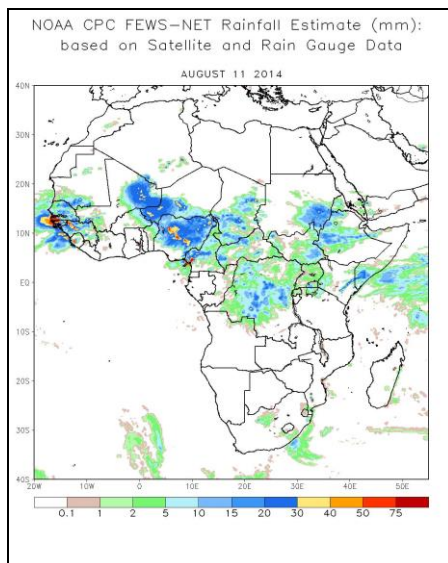
(August 11, 2014 – August 12, 2014)

2.1. Weather assessment for the previous day (August 11, 2014)

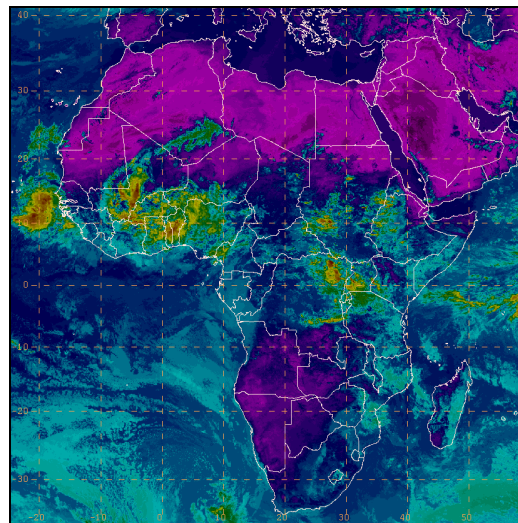
During the previous day, moderate to heavy rainfall was observed over portion of Northwestern to Cote d'Ivoire, Guinea, portion of Senegal, local areas of Mauritania, Mali and Sierra Leon, Nigeria, Southern Niger, portion of Chad, DRC, CAR, local areas of Cameroun, portions of Sudan, Uganda, local areas of Kenya, portions of Ethiopia, Somalia and Eritrea.

2.2. Weather assessment for the current day (August 12, 2014)

Intense clouds are observed over northwestern Mali, Central Togo and Benin, western Ghana, Southern Burkina, western Sudan, northeastern DRC, western Uganda and Ethiopia.



IR Satellite Image (valid 1630 Z of August 12, 2014)



Previous day rainfall condition over Africa (top Left) based on the NCEP CPCE/RFE and current day cloud cover (top right) based on IR Satellite image

Author: Kouakou YA (Cote d'Ivoire, Service National de la Meteorologie / CPC-African Desk); kouakou.ya@noaa.gov