

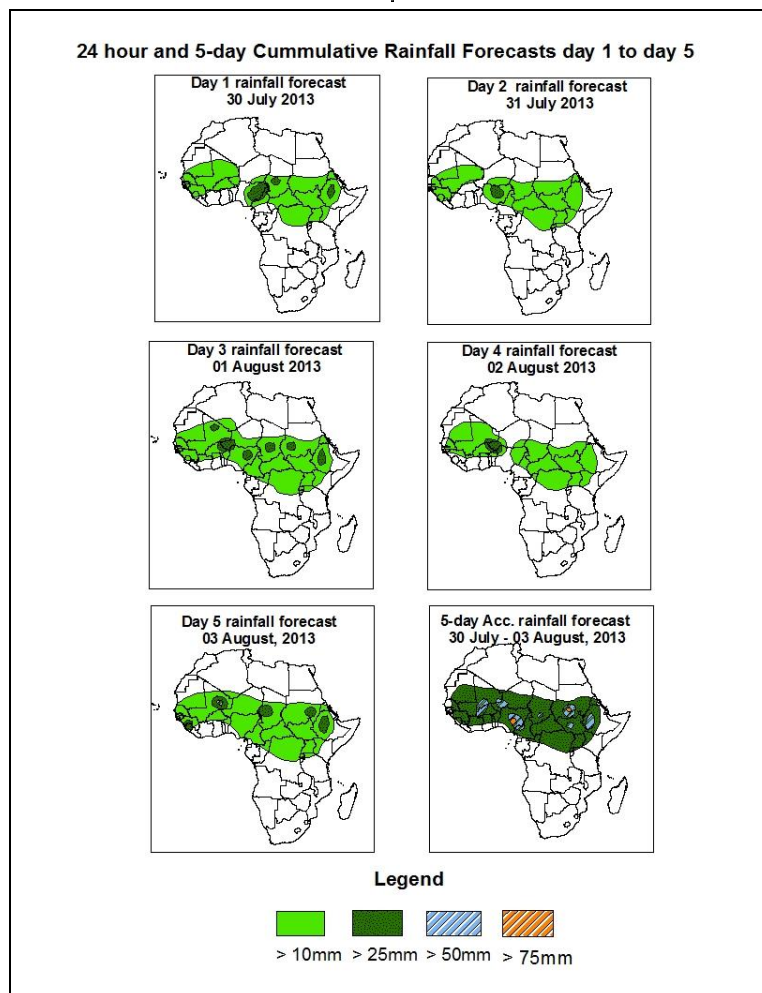


NCEP Contributions to the WMO Severe Weather Forecasting Demonstration Project (SWFDP) and to the African Monsoon Multidisciplinary Analysis (AMMA) Initiative

1.0. Rainfall Forecast: Valid 06Z of 30 July – 06Z of 03 August, 2013. (Issued at 1700Z of 29 July, 2013)

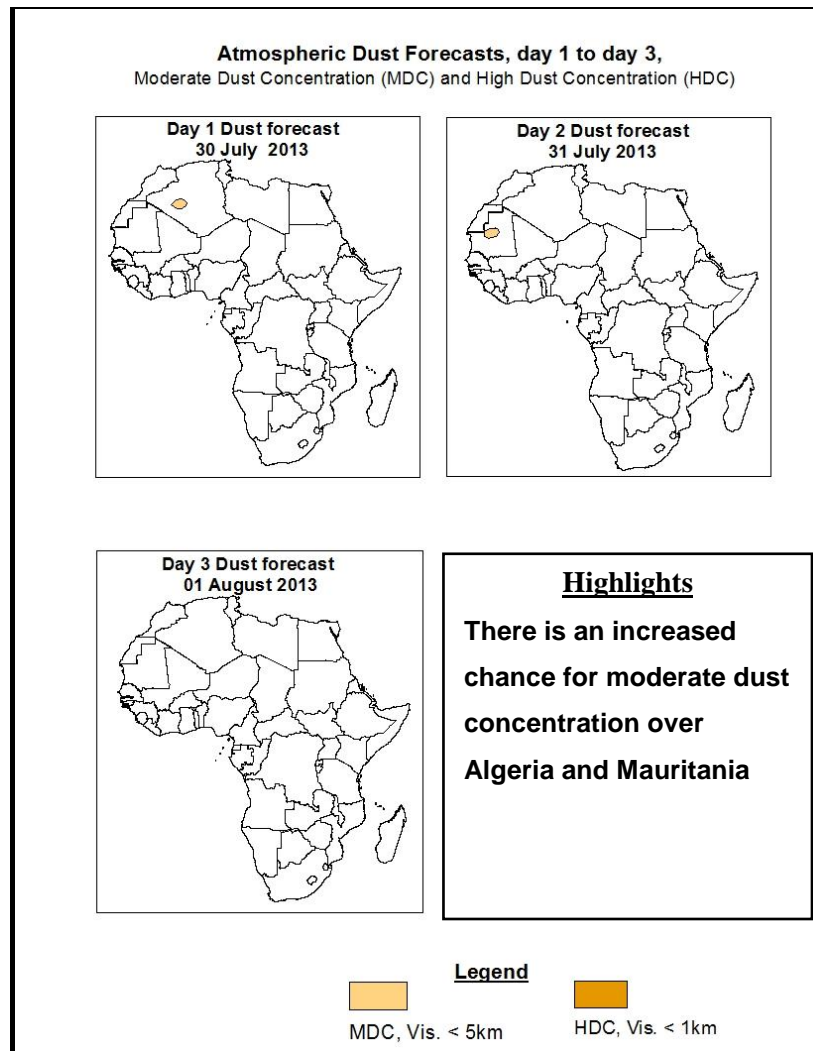
1.1. Twenty Four Hour Cumulative Rainfall Forecasts

The forecasts are expressed in terms of 75% probability of precipitation (POP) exceeded, based on the NCEP, UK Met Office and the ECMWF NWP outputs, the NCEP global ensemble forecasts system (GEFS) and expert assessment.



Summary

In the next five days, the zone of seasonal and monsoon wind convergence is expected to push further northwards and shift rainfall activities further to the North over the region. Coastal rainfall along the Gulf of Guinea is also expected to decrease as the 1016hPa isobar of the St. Helena high pressure system reaches a position of Latitude 10°N over West Africa during the period. Strong cross equatorial flow, with its associated convergence over the Horn of Africa is expected to modulate rainfall over East Africa. Thus, there is an increased chance for moderate to heavy rainfall over Nigeria, Niger, Guinea, Senegal, Mauritania, Sierra Leone, Mali, Burkina Faso, northern Ghana, CIV, Cameroun, southern Chad, CAR, Gabon, Sudan, northern DRC, Uganda, Kenya, Eritrea and Ethiopia.



1.2. Model Discussion: Valid from 00Z of 29 July 2013

Model comparison (Valid from 00Z;29 July, 2013) shows all the three models are in general agreement in terms of depicting positions of the northern and southern hemisphere sub-tropical highs, while they showed slight differences in depicting their intensity.

The Azores High Pressure System over Northeast Atlantic Ocean is expected to weaken during the forecast period. Its central pressure value is expected to decrease from 1026hPa to 1024hPa according to the GFS and UKMET models, 1026hPa to 1025hPa according to ECMWF model.

The St. Helena High Pressure System over southeast Atlantic Ocean is expected to weaken during the forecast period. Its central pressure value is expected to decrease from 1035hPa to 1028hPa according to the GFS model, 1034hPa to 1025hPa according to the ECMWF and UKMET models.

The Mascarene high pressure system over southwestern Indian Ocean is expected to slightly weaken through 24 to 72 hours and intensify thereafter. Its central value is expected to decrease from 1035hPa to 1033hPa through 24 to 72 hours according to the GFS and UKMET models, 1034hPa to 1032hPa according to the ECMWF model and increase thereafter.

The heat lows over the central Sahel and neighboring areas are expected to fill up slightly during 24 to 72 hours and deepen thereafter. The lowest central pressure value is expected to vary between 1003hPa to 1005hPa according to the GFS model, 1005hPa to 1007hPa according to ECMWF model and 1002hPa to 1005hPa according to the UKMET model. The seasonal lows across the Red sea and its neighboring areas are also expected to fill up during the forecast period. Values are likely to vary from 1002hPa to 1005hPa according to the GFS model, 1004hPa to 1007hPa according to ECMWF model and 1003hPa to 1006hPa according to the UKMET model.

At the 850hPa level, monsoon wind flow is expected to dominate flow across West Africa and penetrate further inland and northwards. Zonal monsoon wind convergence is also expected to dominate the flow across central parts of the Sahel South of latitude 19°N, while meridional wind convergence will dominate flow across Sudan, eastern DRC and Ethiopia. Rainfall along the coast of Liberia, Togo, Ghana, Cote d'Ivoire and southwest Nigeria, is therefore expected to decrease as winds diverge from these areas and converge over the inland areas during the forecast period. The slight increase in number of vortices at this level and wind convergence over Africa is expected to maintain moderate to heavy rainfall over the region and the highest rainfall likely over Mali, Nigeria, Sudan and Ethiopia.

At 700hPa level, a wavy flow pattern of winds and trough lines are observed during the 24 to 48 hour period while the subtropical anticyclone in the northern and southern hemispheres are expected to maintain northeasterly to easterly flow over West and central Africa during the period.

At 500hpa level, wind speed associated with mid-tropospheric easterly jet show common speeds of 30kts over isolated places in Algeria and Mauritania during the forecast period.

At 150hPa level, tropical easterly jets are now stronger over East and West Africa particularly along the Gulf of Guinea coast. Speeds of 30 to 40kts are common over West Africa while speeds of 50 to 60kts are common over most parts of East Africa during the period. Speeds exceeding 70kts are however observed over Ethiopia, Kenya, Sudan, Uganda and Somalia during the forecast period.

In the next five days, the zone of seasonal and monsoon wind convergence is expected to push further northwards and shift rainfall activities further to the North over the region. Coastal rainfall along the Gulf of Guinea is also expected to decrease as the 1016hPa isobar of the St. Helena high pressure system reaches a position of Latitude 10oN over West Africa during the period. Strong cross equatorial flow, with its associated convergence over the Horn of Africa is expected to modulate rainfall over East Africa. Thus, there is an increased chance for moderate to heavy rainfall over Nigeria, Niger, Guinea, Senegal, Mauritania, Sierra Leone, Mali, Burkina Faso, northern Ghana, CIV, Cameroun, southern Chad, CAR, Gabon, Sudan, northern DRC, Uganda, Kenya, Eritrea and Ethiopia.

2.0. Previous and Current Day Weather Discussion over Africa (28 July 2013 – 29 July 2013)

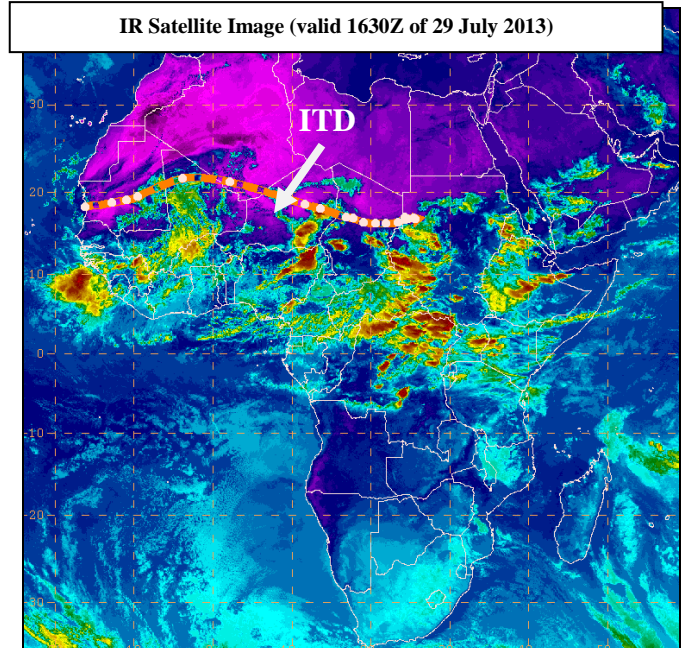
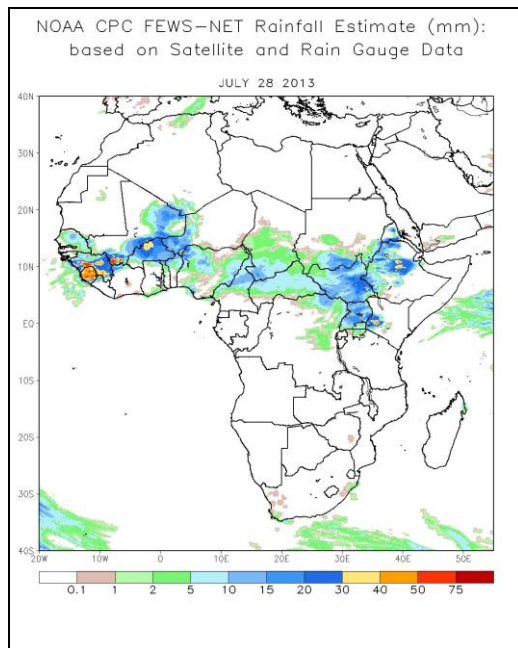
2.1. Weather assessment for the previous day (28 July 2013)

During the previous day, moderate to locally heavy rainfall was observed over Ethiopia, Eritrea, South Sudan, Uganda, Kenya, northern DRC, CAR, Cameroun, Nigeria, southwestern Niger, Mali, Guinea, Burkina Faso, Senegal and Sierra Leone.

2.2. Weather assessment for the current day (29 July, 2013)

Intense clouds were observed over Ethiopia, Uganda, Kenya, Sudan, CAR, DRC, Nigeria, southern Chad, Niger republic, Mali and Guinea.

The ITD is located at an average position of latitude 19°N over Africa.



Previous day rainfall condition over Africa (top Left) based on the NCEP CPCE/RFE and current day cloud cover (top right) based on IR Satellite image

Author: Paul Ugbah, (Nigeria Meteorological Agency / CPC-African Desk); paul.ugbah@noaa.gov