

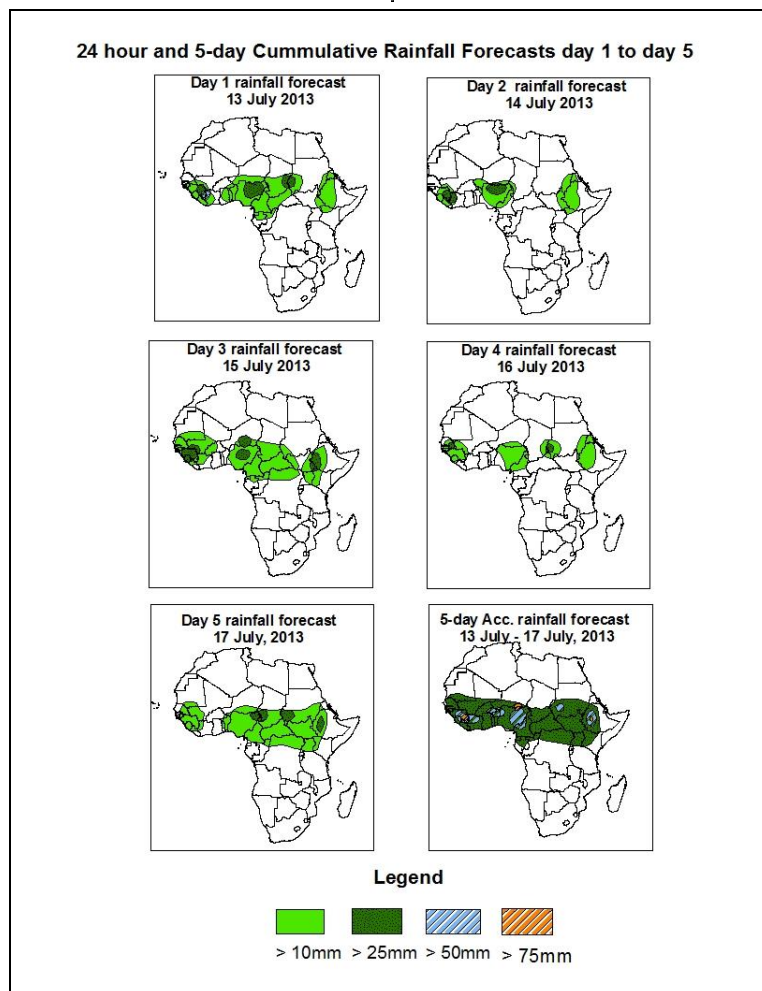


# NCEP Contributions to the WMO Severe Weather Forecasting Demonstration Project (SWFDP) and to the African Monsoon Multidisciplinary Analysis (AMMA) Initiative

## 1.0. Rainfall Forecast: Valid 06Z of 13 July – 06Z of 17 July, 2013. (Issued at 1700Z of 12 July, 2013)

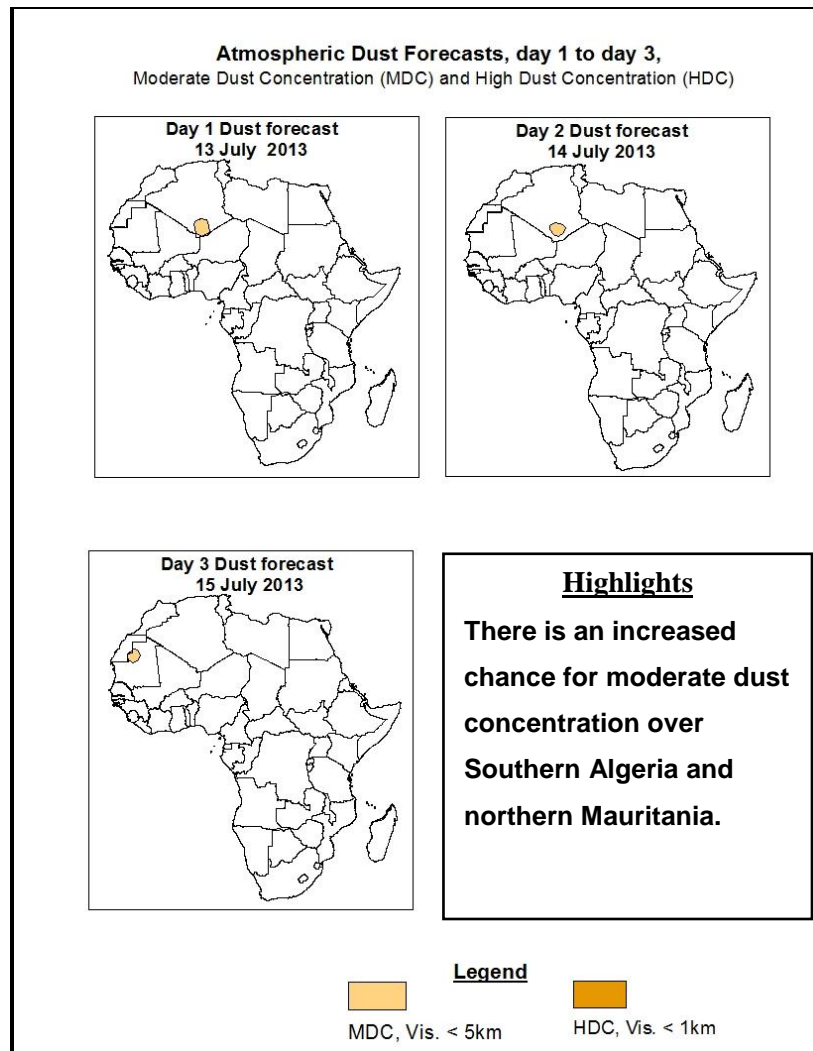
### 1.1. Twenty Four Hour Cumulative Rainfall Forecasts

The forecasts are expressed in terms of 75% probability of precipitation (POP) exceeded, based on the NCEP, UK Met Office and the ECMWF NWP outputs, the NCEP global ensemble forecasts system (GEFS) and expert assessment.



### Summary

In the next five days, moisture convergence over West Africa, Central Africa regions and the seasonal wind convergence in Congo Air Boundary (CAB) region is generally expected to modulate rainfall in these regions. Madden Julian oscillation (MJO) signal is expected to be weak over Africa while Strong cross equatorial flow, with its associated convergence over the Horn of Africa is expected to enhance precipitation over East and West Africa. Tropical easterly jets are also becoming stronger over East Africa. Thus, there is an increased chance for moderate to heavy rainfall over Senegal, Guinea, Sierra Leone, Mali, Burkina Faso, Cote d'Ivoire, Togo, Nigeria, Cameroun, southern Chad, CAR, Gabon, Sudan, northern DRC, western Ethiopia and Kenya



## 1.2. Model Discussion: Valid from 00Z of 12 July 2013

*Model comparison (Valid from 00Z; 12 July, 2013) shows all the three models are in general agreement in terms of depicting positions of the northern and southern hemisphere sub-tropical highs, while they showed slight differences in depicting their intensity.*

The Azores High Pressure System over Northeast Atlantic Ocean is expected to slightly intensify through 24 to 72 hours and weaken thereafter. Its central pressure value is expected to increase from 1024hPa to 1026hPa through 24 to 72 hours according to the GFS model and ECMWF models, 1024hpa to 1025hPa according to the UKMET model.

The St. Helena High Pressure System over southeast Atlantic Ocean is expected to weaken through 24 to 96 hours and intensify thereafter. Its central pressure value is expected to decrease from 1029hPa to 1026hPa through 24 to 96 hours according to the GFS model, 1028hPa to 1025hPa according to the ECMWF model, 1029hPa to 1024hPa according to the UKMET model.

The Mascarene high pressure system over southwestern Indian Ocean is also expected to weaken during the forecast period. Its central value is expected to decrease from 1026hPa to 1024hPa according to the GFS model, 1025hPa to 1021hPa according to the ECMWF and UKMET models.

The heat lows over the central Sahel and neighboring areas are expected to slightly fill up through 48 to 96 hours and deepen thereafter. The lowest central pressure value is expected to vary between 1005hPa to 1006hPa during the forecast period according to the GFS model, 1006hPa to 1008hPa according to ECMWF model and 1004hPa to 1007hPa according to the UKMET model. The seasonal lows across the Red sea and its neighboring areas are expected to fill up slightly with values varying from 999hPa to 1001hPa according to the GFS model, maintain average value of 1003hPa according to ECMWF model and 1002hPa according to UKMET model.

At the 850hPa level, monsoon wind flow is expected to dominate flow across West Africa and penetrate further inland. Zonal monsoon wind convergence is also expected to dominate the flow across central parts of the Sahel South of latitude 18°N, while meridional wind convergence will dominate flow across Sudan, eastern DRC and Ethiopia. Rainfall along the coast of Togo, Ghana, Cote d'Ivoire is therefore expected to be variable as the flow pattern over these areas change occasionally during the forecast period. The increase in number of vortices at this level and wind convergence over Africa is expected to maintain moderate to heavy rainfall over some parts of the region.

At 700hPa level, the progressive intensification of subtropical anticyclone in the northern and southern hemispheres is expected to favour northeasterly to easterly flow over West and central Africa during the period.

At 500hpa level, wind speed associated with mid-tropospheric easterly jet are still weak and show common speeds of 30kts around isolated places in Mali, Guinea, Nigeria, Mauritania and Senegal during the forecast period.

At 150hPa level, tropical easterly jets are becoming stronger and cover wider areas over East Africa. Speeds vary between 30 to 50kts over West Africa while wind speeds exceeding 70kts are common over Somalia, Ethiopia, Sudan and Kenya during the forecast period.

In the next five days, moisture convergence over West Africa, Central Africa regions and the seasonal wind convergence in Congo Air Boundary (CAB) region is generally expected to modulate rainfall in these regions. Madden Julian oscillation (MJO) signal is expected to be weak over Africa while Strong cross equatorial flow, with its associated convergence over the Horn of Africa is expected to enhance precipitation over East and West Africa. Tropical easterly jets are also becoming stronger over East Africa. Thus, there is an increased chance for moderate to heavy rainfall over Senegal, Guinea, Sierra Leone, Mali, Burkina Faso, Cote d'Ivoire, Togo, Nigeria, Cameroun, southern Chad, CAR, Gabon, Sudan, northern DRC, western Ethiopia and Kenya

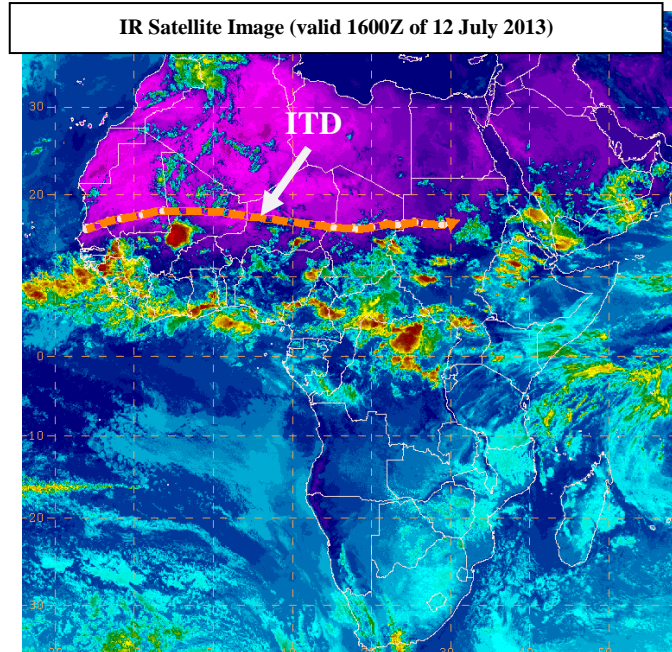
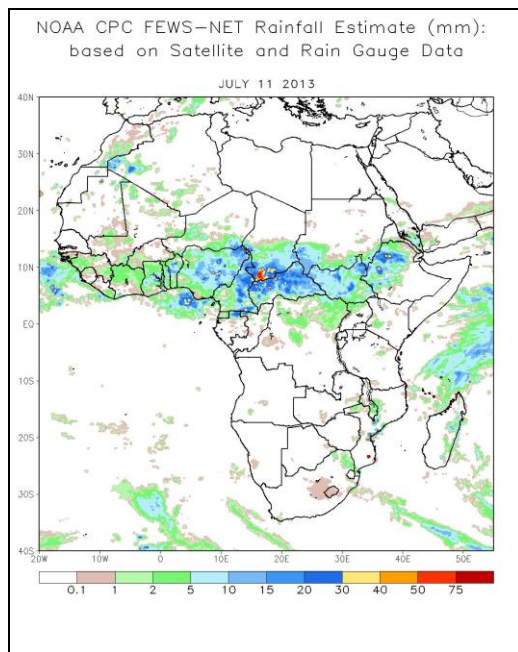
## 2.0. Previous and Current Day Weather Discussion over Africa (11 July 2013 – 12 July 2013)

### 2.1. Weather assessment for the previous day (11 July 2013)

During the previous day, moderate to locally heavy rainfall was observed over western Ethiopia, CAR, Cameroun, northern Gabon, Nigeria, Benin republic, Ghana, Guinea and northwestern Algeria.

### 2.2. Weather assessment for the current day (12 July, 2013)

Intense clouds were observed over Ethiopia, Eritrea, Sudan, Chad, CAR, northern DRC, Uganda, Cameroun, Niger, Nigeria, Ghana, Cote d'Ivoire, Liberia, Sierra Leone, Guinea, Mali and Senegal. The ITD is located at an average position of latitude 18°N over Africa.



*Previous day rainfall condition over Africa (top Left) based on the NCEP CPCE/RFE and current day cloud cover (top right) based on IR Satellite image*

**Author:** Paul Ugbah, (Nigeria Meteorological Agency / CPC-African Desk); [paul.ugbah@noaa.gov](mailto:paul.ugbah@noaa.gov)