

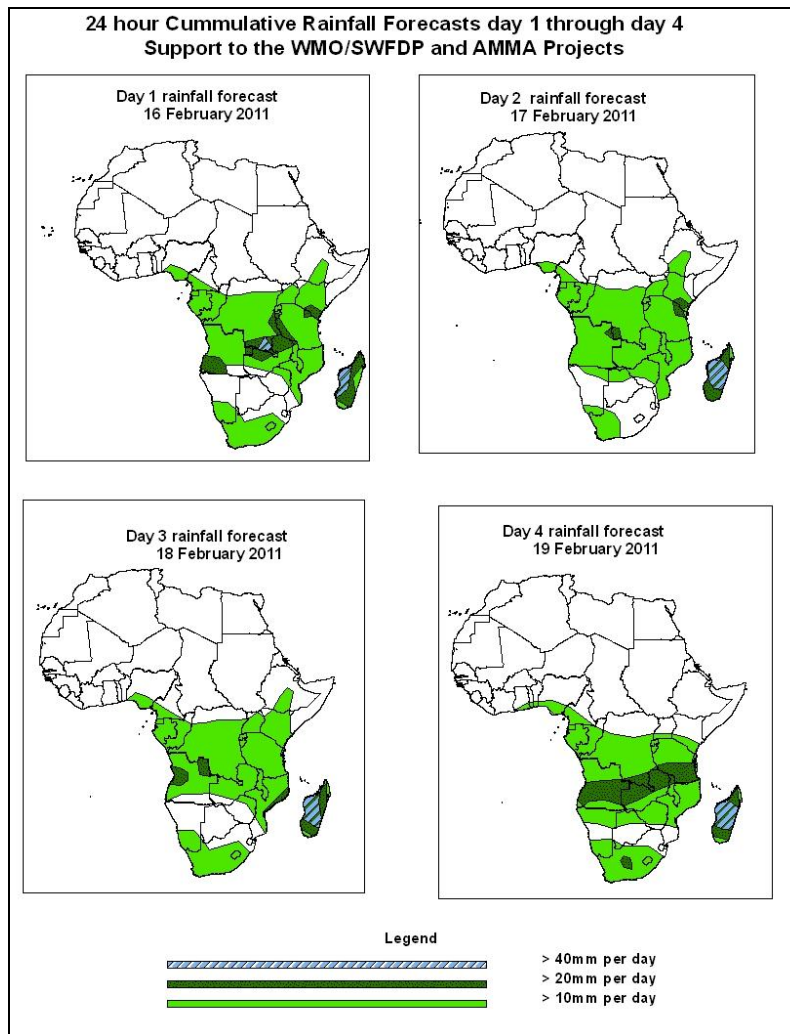


NCEP Contributions to the WMO Severe Weather Forecasting Demonstration Project (SWFDP) and to the African Monsoon Multidisciplinary Analysis (AMMA) Initiative

1.0. Rainfall Forecast: Valid, 06Z of 16 February – 06Z of 19 February 2011, (Issued at 11:40Z of 15 February 2011)

1.1. Twenty Four Hour Cumulative Rainfall Forecasts

The forecasts are expressed in terms of probability of precipitation (POP) exceeded based on the NCEP, UK Met Office and the ECMWF NWP outputs, the NCEP global ensemble forecasts system (GEFS) and expert assessment.



Summary

In the coming four days, moderate to heavy rainfall is expected to continue over Tanzania, Zambia, southern DRC, Malawi, Angola and Mozambique due to the persistent lower level convergence in the region and the deepening cyclonic circulation in the vicinity of Mozambique Channel enhanced by cyclone Binziga. Moderate to heavy rains in excess of 20.0 – 40.0 mm are expected over Madagascar during the period. Hence, there is an increased chance for rainfall to exceed 20mm per day over Madagascar, Zambia, Angola, Malawi, southeastern DRC, Mozambique, Kenya, South Africa and Tanzania.

1.2. Models Comparison and Discussion-Valid from 00Z of 16 February 2011

The GFS, ECMWF and UKMET models, indicates a series of cut off lows over the southern parts of the Gulf of Guinea, parts of central African region and southern Sudan should form an east-west oriented trough. In the coming four days, this trough is expected to persist with a central value of about 1003hpa in its eastern end (mainly over Central African Republic / Sudan region) and a central value of 1006hpa along its western end. The lows associated with the meridional arm of the ITCZ are hardly active for the entire period. A low pressure system in the vicinity of Mozambique Channel and Madagascar is expected to maintain its position and persist throughout the period in consideration. In general, there appears to be some level of disparity in pressure patterns as depicted by the GFS, ECMWF and UKMO models.

According to the GFS, ECMWF and UKMET models, St. Helena High pressure system is expected to intensify from 24hour period with a central value of 10245hpa to 1028hpa by 48hour period. Then weaken to 1024hpa by 72 to 96 hours. The Mascarene high pressure system over southwest Indian Ocean should remain quasi-stationary through the four (4) day period with a central value of 1020hpa.

At 850hPa level, the GFS model indicates east-west oriented convergence line in the region between the coastal areas of the Gulf of Guinea and northeast DRC. The convergence is expected to persist all through the period. The north-south oriented convergence line is however inactive except for 96 hour period. Another convergence line is expected over the Angola region, while a localized cyclone is expected to extend into South Africa. The cyclonic circulation near Madagascar is still expected to persist with the presence of tropical cyclone Bingiza still evident.

At 700hPa level, mostly northeasterly to easterly winds dominate across western and central African countries. A strong lower tropospheric convergence is expected to dominate the flow over Angola, Malawi, Mozambique and Zambia within 24 to 96 hours. The cyclonic circulation in the Mozambique Channel is expected to persist and deepen within the next 24 hours as cyclone Bingiza sweeps across Madagascar.

At 200hPa, a zone of strong wind (>150Kts) associated with the Sub Tropical westerly Jet in the sub-tropical region of northern Africa is expected to attain a wavy pattern through 24 to 48hours then decreasing in strength (>130Kts) by 72 to 96 hour period.

Similarly, strong winds (>90Kts) associated with the Sub-Tropical Westerly Jet in the Sub Tropical region of southern Africa is expected to appear as pockets all through 24 to 96 hour period.

In the coming four days, moderate to heavy rainfall is expected to continue over Tanzania, Zambia, southern DRC, Malawi, Angola and Mozambique due to the persistent lower level convergence in the region and the deepening cyclonic circulation in the vicinity of Mozambique Channel enhanced by cyclone Binziga. Moderate to heavy rains in excess of 20.0 – 40.0 mm are expected over Madagascar during the period. Hence, there is an increased chance for rainfall to exceed 20mm per day over Madagascar, Zambia, Angola, Malawi, southeastern DRC, Mozambique, Kenya, South Africa and Tanzania.

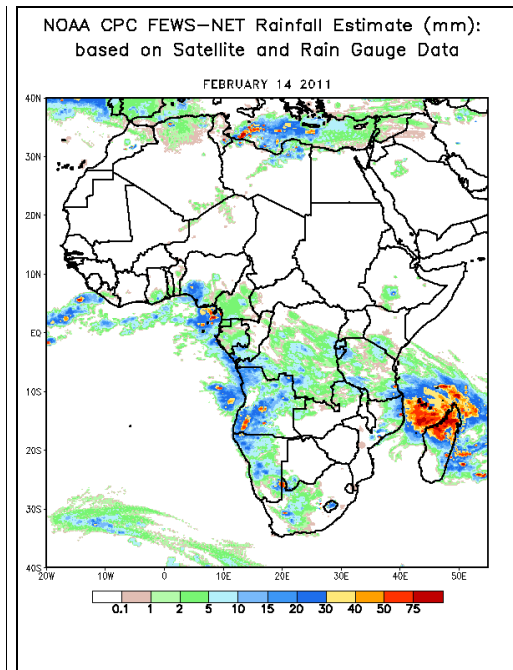
2.0. Previous and Current Day Weather Discussion over Africa (14 – 15 February 2011)

2.1. Weather assessment for the previous day (14 February 2011):

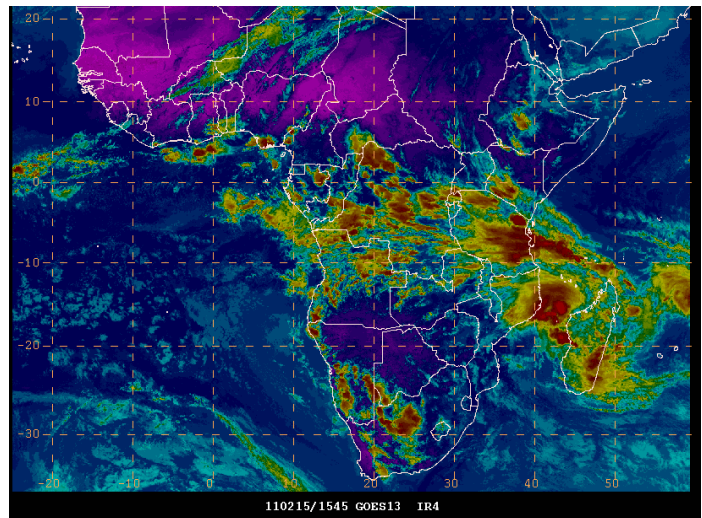
During the previous day, a combination of moderate and heavy rainfall was observed over western parts of Gulf of Guinea, Cameroun, Congo, DRC, Angola, Namibia, Tanzania, Mozambique, Botswana, Burundi, Rwanda, Kenya, Madagascar and South Africa.

2.2. Weather assessment for the current day (15 February 2011):

Intense clouds are observed over Madagascar, Mozambique, Tanzania, Kenya, Rwanda, DRC, Namibia, Botswana, Angola, Zambia, Gabon, Congo, CAR and South Africa.



IR Satellite Image, Valid 1545Z, February 15, 2011



*Previous day rainfall condition over Africa (Left)
based on the NCEP CPCE/RFE and current day
cloud cover (top) based on IR Satellite image*

Author(s): Onyilo Desmond Onyilo (Nigerian Meteorological Agency) / CPC-African Desk), Desmond.Onyilo@noaa.gov

Disclaimer: This bulletin is for training purposes only and should be used as guidance. NOAA does not make forecasts for areas outside of the United States.